



“SOUND PERFORMANCE”

**PRODUCT CATALOG**  
**FEB. 2024**

# ***Our Motto: "Whatever it Takes!"***

Dear Customer/Distributor:

Jones Exhaust Systems, Inc. is one of the largest specialty exhaust manufacturers in the U.S.A. We have the distinction of being the largest manufacturer of chrome exhaust tips and glasspack mufflers in the United States.

Jones Exhaust offers many unique products that are not available anywhere else in the industry. Examples include the "Full Boar" V-Power performance muffler, which is the only muffler that utilizes flow deflector technology and are 100% reversible, the "Silver Vein" and "Black Vein" series of textured powder coated tips, and our "Midnight Pearl" dark shaded chrome tips.

All stock orders are delivered within 10 days, and we have some of the lowest freight minimums in the industry. This combination of quality, service, and products that are available nowhere else in the industry, combined with our "whatever it takes" attitude, enables us to provide the most performance for the dollar in the industry.

## **Return Policy**

**Due to the costs involved in transportation, reconditioning, and reshipping returned merchandise, Jones Exhaust Systems, Inc. must charge a 15% restocking fee on all returned merchandise. Only full case quantities may be returned. There can be no exceptions to this policy. We cannot accept any returns on product that was a special build item, or any product that has been discontinued or is no longer in our catalog.**

## **Warranty Policy**

Jones Exhaust Systems, Inc. warrants our manufactured exhaust system products to buyers of products for resale only against defects in craftsmanship and materials for one (1) year from the date of resale or installation.

All Full Boar Branded Performance mufflers carry a limited warranty. Expansion is guaranteed only to 1/4 inch over the original neck size.

Warranty does not apply to any manufactured products that have been subject to misapplication, abuse, misuse, normal wear, negligence, backfire damage, accidents, burnout due to poor carburetion, and rust out. This warranty does not cover any labor charged or any other claims incidental to replacing a defective part.

Warranty is limited to the repair or replacement of a defective product. A final decision as to whether a product is defective will be made by Jones Exhaust after an evaluation of the product. To obtain service under this warranty, call your customer service representative.

## **Sound Disclaimer**

Jones Exhaust Systems, Inc. will not be responsible for, or guarantee, any exhaust products we manufacture or sell to comply with various sound level ordinances.

NOTE: Although every effort has been made to ensure the accuracy of information, Jones Exhaust Systems, Inc. is not responsible for errors in this catalog's content. We reserve the right to change pricing and/or the design of products without notification.

## **Terms and Conditions**

All open accounts must have an approved credit application on file. Payment is due 30 days after receipt of merchandise. Accounts 30 days past due will be delinquent. No shipments will be made to delinquent accounts until past due amount is paid in full. Past Due accounts will be charged a finance fee of 1% per month.

## **Credit Card Policy**

We have for several years charged a 3% fee when a credit card is used to pay a past due invoice. We now must charge a 2% fee on all invoices paid by credit card and a 4% fee if a card is used on a past due account. These changes are in an effort to hold down our prices to everyone.



# Chrome Plated Exhaust Tips



## Chrome Mufflers/Resonators

Part #	Inlet Size (ID)	# Per Box	Overall Size (OD)
JCM212	2"	12	9" X 2.5"
JCM312	2"	12	12" X 3"
JCM316	2"	12	16" X 3"
JCM31222	2.25"	6	22" X 3.5"



## Foreign Car Tips

Part #	Inlet Size (ID)	# Per Box	Overall Size (OD)
JFC112	1.5"	12	6" x 1.75"
JFC134	1.75"	12	6" x 2"
JFC200	2"	12	6" x 2.25"



## Chevelle Tips

Part #	Inlet Size (ID)	# Per Box	Outlet Size	Length	Pipe Diameter (OD)
JWS200	2"	12	1.75" x 3"	7"	2.5"
JWT200	2"	12	1.75" x 3.75"	9"	3"
JWT212	2"	12	1.75" x 3.75"	12"	3"
JBT200	2"	12	2" x 3"	9"	3"
JST200	2"	12	2.75" x 2.875"	12"	3"
JWT214	2.25"	12	1.75" x 3.75"	9"	3"
JCT410	2.5"	6	1.75" x 5"	10"	4"



## Inside Roll Pencil Tips

Part #	Inlet Size (ID)	# Per Box	Overall Size (OD)
IRPT134	1.75"	12	8" x 2.5"
IRPT200	2"	12	8" x 2.5"
IRPT214	2.25"	12	8" x 2.5"
IRPT212*	2.5"	12	8" x 2.5"

## Inside Roll Pencil Tips

Part #	Inlet Size (ID)	# Per Box	Overall Size (OD)
IRPT3006	2"	12	6" x 3"
IRPT3012	2"	12	12" x 3"
IRPT3506	2.25"	6	6" x 3.5"
IRPT3518	2.25"	6	18" x 3.5"
IRPT4006	2.5"	6	6" x 4"
IRPT4012	2.5"	6	12" x 4"
IRPT4018	2.5"	6	18" x 4"
IRPT5012	2.5"	4	12" x 5"
IRPT5018	2.5"	4	18" x 5"
IRPT3512	2.25"	6	12" x 3.5"
IRPT3512-3	3"	6	12" x 3.5"
IRPT4012-312	3.5"	6	12" x 4"
IRPT4016-312	3.5"	6	16" x 4"
IRPT5012-4	4"	4	12" x 5"

\*Inlet swaged or expanded to ID size.



## Dual Angle Resonator

Part #	Inlet Size (ID)	# Per Box	Dual Outlet (OD)	Overall Size
JDR200	2"	6	2.5"	14.5" x 6"
JDR214	2.25"	6	2.5"	14.5" x 6"
JDR212	2.5"	6	2.5"	14.5" x 6"

## Custom Built Exhaust Tips

We can custom build chrome exhaust tips for you. Other suppliers cannot or will not do this. At Jones Exhaust, our motto is "Whatever it takes". Allow 3-4 weeks for delivery on special orders.



### Truck Stacks

Part #	Inlet Size (OD)	# Per Box	Overall Size (OD)
JTS300	3" Mandrel bent. Includes shields and hardware.	1 pair (sold in pairs)	50" x 3"
JTK300	Truck shield kit - with hardware		



### Dual Truck Tips (Left and Right)

Part #	Inlet Size (ID)	# Per Box	Dual Outlet (OD)	Overall Size
JTT200R	2"	12	2.25"	12" x 6.5"
JTT200L	2"	12	2.25"	12" x 6.5"



### Dual Trans Am Tips

Part #	Inlet Size (ID)	# Per Box	Overall Size
JDT200	2"	12	12" x 4.5"
JDT214	2.25"	12	12" x 4.5"

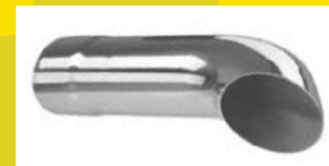
### Dual Angle Tips

Part #	Inlet Size (ID)	# Per Box	Dual Outlet (OD)	Overall Size
JDA312-200	2"	4	3"	21" x 7.5"
JDA312-214	2.25"	4	3"	21" x 7.5"



### Dual Angle Cut Tips

Part #	Inlet Size (ID)	# Per Box	Dual Outlet (OD)	Overall Size
JDA200	2"	12	2.25"	11" x 5.5"
JDA214	2.25"	12	2.5"	11" x 5.5"



### Turn Down Tips

Part #	Inlet Size (ID)	# Per Box	Overall Size (OD)
JTD112	1.5"	12	8" x 1.75"
JTD134	1.75"	12	8" x 2"
JTD200	2"	12	9" x 2.25"
JTD214	2.25"	12	12" x 2.5"
JTD212*	2.5"	12	12" x 2.5"

\*Inlet swaged or expanded to ID size.



### Dual Pencil Tips

Part #	Inlet Size (ID)	# Per Box	Dual Outlet (OD)	Overall Size
JDP200	2"	12	2.25"	11" x 5.5"

### Inside Roll Angle Cut Tips

Part #	Inlet Size (ID)	# Per Box	Overall Size (OD)
IRAC312	2"	12	3" x 12"
IRAC316	2"	12	3" x 16"
IRAC324	2"	12	3" x 24"
IRAC31212	2.25"	6	3.5" x 12"
IRAC31212-3	3"	6	3.5" x 12"
IRAC31216	2.25"	6	3.5" x 16"
IRAC31218	2.25"	6	3.5" x 18"
IRAC31222	2.25"	6	3.5" x 22"
IRAC412	2.5"	6	4" x 12"
IRAC418	2.5"	6	4" x 18"
IRAC422	2.5"	6	4" x 22"
IRAC512	2.5"	4	5" x 12"
IRAC518	2.5"	4	5" x 18"
IRAC524	2.5"	4	5" x 24"
IRAC7018	4"	1	7" x 18"
IRAC7018-5	5"	1	7" x 18"
IRAC8018	4"	1	8" x 18"
IRAC8018-5	5"	1	8" x 18"

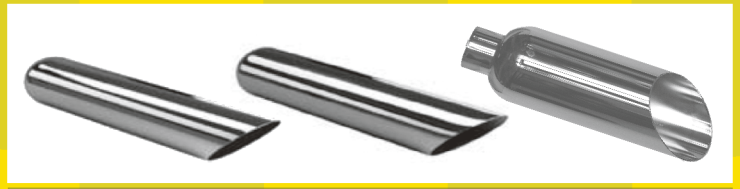


# Chrome Plated Exhaust Tips



## Pencil Tips

Part #	Inlet Size (ID)	# Per Box	Overall Size (OD)
JPT112	1.5"	12	8" x 1.75"
JPT134	1.75"	12	8" x 2"
JPT200	2"	12	9" x 2.25"
JPT214	2.25"	12	9" x 2.5"
JPT212	2.5"	12	9" x 2.75"
JPT312	2"	12	12" x 3"
JPT312-3*	3"	12	12" x 3"
JPT316	2"	12	16" X 3"
JPT320-3*	3"	12	20" x 3"
JPT324	2"	12	24" x 3"
JPT31212	2.25"	6	12" x 3.5"
JPT31212-3	3"	6	12" x 3.5"
JPT31218	2.25"	6	18" x 3.5"
JPT31220	2.25"	6	20" x 3.5"
JPT31220-3	3"	6	20" x 3.5"
JPT412-4*	4"	6	12" x 4"
JPT416	2.5"	6	16" X 4"
JPT418-4*	4"	6	18" x 4"



## Angle Cut Tips

Part #	Inlet Size (ID)	# Per Box	Overall Size (OD)
JAC112	1.5"	12	8" x 1.75"
JAC134	1.75"	12	8" x 2"
JAC200	2"	12	9" x 2.25"
JAC214	2.25"	12	9" x 2.5"
JAC212	2.5"	12	9" x 2.75"
JAC21218	2"	12	18" x 2.5"
JAC312	2"	12	12" x 3"
JAC312-214	2.25"	12	12" x 3"
JAC316	2"	12	16" x 3"
JAC316-214	2.25"	12	16" x 3"
JAC316-3*	3"	12	16" x 3"
JAC322	2"	12	22" x 3"
JAC322-3*	3"	12	22" x 3"
JAC324	2"	12	24" x 3"
JAC324-214	2.25"	12	24" x 3"
JAC31212	2.25"	6	12" x 3.5"
JAC31216	2.25"	6	16" x 3.5"
JAC31216-3	3"	6	16" x 3.5"
JAC31218	2.25"	6	18" x 3.5"
JAC31222	2.25"	6	22" x 3.5"
JAC31222-212	2.5"	6	22" x 3.5"
JAC31222-3	3"	6	22" x 3.5"
JAC412	2.5"	6	12" x 4"
JAC412-312	3.5"	6	12" x 4"
JAC412-4*	4"	6	12" x 4"
JAC416-312	3.5"	6	16" x 4"
JAC418	2.5"	6	18" x 4"
JAC418-3	3"	6	18" x 4"
JAC418-4*	4"	6	18" x 4"
JAC422	2.5"	6	22" x 4"
JAC422-3	3"	6	22" x 4"
JAC424	2.5"	6	24" x 4"
JAC512-4*	4"	4	12" x 5"
JAC518	2.5"	4	18" x 5"
JAC518-4	4"	4	18" x 5"
JAC524	2.5"	4	24" x 5"
JAC618-4	4"	4	6" x 18"
JAC618-212	2.5"	4	6" x 18"

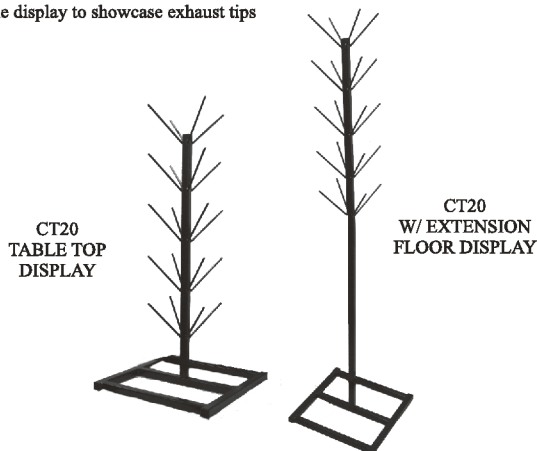


## Specialty Chrome Tips

Part #	Inlet Size (ID)	# Per Box	Description
JGT200	2"	6	Mustang GT Tip

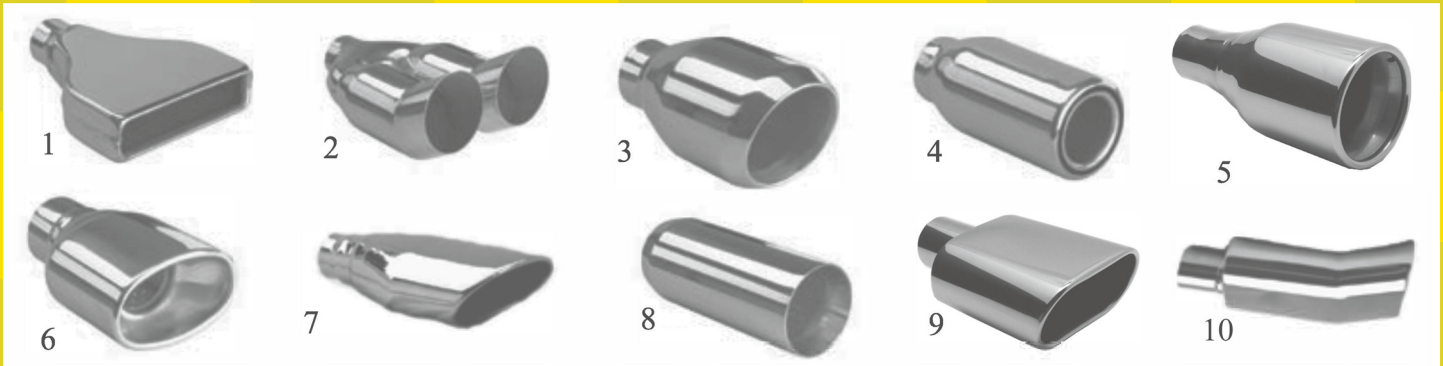
## CHROME STAINLESS TIP DISPLAY STAND

-Versatile display to showcase exhaust tips



\* Inlet Swaged or expanded to ID size.

# Chrome Plated Exhaust Tips



## Specialty Tips

Part#	Type	Inlet Size (ID)	# Per Box	Outlet Size	Length
PCAM214SS		2.25"	IO	7.75" x 2.25"	10"
PCAM234SS		2.75"	IO	7.75" x 2.25"	10"
PDTU312SS	2	2.25"	5	3.5" (dual)	12"
PSDW4128SS*	3	2.25"	10	4.5"	8"
PDW3002SS*	4	2.25"	10	3"	6.25"
PDW41210SS*	5	2.25" 1	0	4.5"	10"
PRPT3507SS 5		2.25"	IO	3.5"	7"
POR5I2SS	6	2.5"	IO 5	.5" x 3.5"	7.5"
PRESPT5012-4SS**	8	4"		5"	12"
PMS625LSS	7L	2.25"(Escalade Style) 1	0	6.25" x 3.75"	12"
PMS625RSS	7R	2.25"(Escalade Style)	10	6.25" x 3.75"	12"
PRS600SS	9	2.25" 1	0	5.5" Oval	9"
<b>PRTU500SS</b>	IO	2.25"	IO	5.00" Oval	9.5"
PDW 3008SS*	4	2.25"	10	2.50"	8"
PDW 4008SS*	4	2.25"	10	3.50"	8"

\*Double Wall. \*\*Weld-on only resonator tips.



## Pencil Tips

Part# I	Inlet Size (ID)	# Per Box	Overall Size (OD)
PPT200SS	2"	IO	9" x 2.25"
PPT214SS 2	.25"	IO	9" x 2.5"
PPT212SS	2.5"	IO	9" X 2.75"

## Chevy Bowtie Tips

Part#	Inlet Size (ID)	# Per Box	Overall Size
JCB214-SS	2.25"	10	9" x 4.75"
JCB212-SS	2.5"	10	9" x 4.75"
JCB234-SS	2.75" 1	0	9" x 4.75"
JCB300-SS	3"	IO	9" x 4.75"

\*Stainless steel tips not designed for neck expansion.



# Stainless Steel Exhaust Tips



## Angle Cut Tips

Part #	Inlet Size (ID)	# Per Box	Overall Size (OD)
PAC200SS	2"	10	9" x 2.25"
PAC214SS	2.25"	10	9" x 2.5"
PAC212SS	2.5"	10	9" x 2.75"
PAC312SS	2.25"	10	12" x 3"
PAC316SS	2.25"	10	16" x 3"
PAC318SS	2.25"	10	18" x 3"
PAC318-212SS	2.5"	10	3" x 18"
PAC324SS	2.25"	10	24" x 3"
PAC31212SS	2.25"	10	12" x 3.5"
PAC31216SS	2.25"	10	16" x 3.5"
PAC31218SS	2.25"	10	18" x 3.5"
PAC31218-212SS	2.5"	10	18" x 3.5"
PAC31222-214SS	2.25"	10	22" x 3.5"
PAC31222SS	2.5"	10	22" x 3.5"
PAC412SS	2.5"	10	4" x 12"
PAC418SS	2.5"	10	18" x 4"
PAC422-214SS	2.25"	10	22" x 4"



## Inside Roll Angle Cut Tips

Part #	Inlet Size (ID)	# Per Box	Overall Size (OD)
PRAC316SS	2.25"	10	16" x 3"
PRAC31212SS	2.25"	10	12" x 3.5"
PRAC31216SS	2.25"	10	16" x 3.5"
PRAC31218SS	2.25"	10	18" x 3.5"
PRAC31218-212SS	2.5"	10	18" x 3.5"
PRAC31222SS	2.5"	10	22" x 3.5"
PRAC418SS	2.5"	10	18" x 4"
PRAC422SS	2.25"	10	22" x 4"
PRAC422-212SS	2.5"	10	22" x 4"
PBRAC4012-4SS*	4"	1	12" x 4"
PBRAC5012-4SS*	4"	1	12" x 5"
PBRAC5012-5SS*	5"	1	12" x 5"
PBRAC5018-5SS*	5"	1	18" x 5"
PBRAC5022-5SS	5"	1	22" x 5"
PBRAC6012-4SS*	4"	1	6" x 12"
PBRAC6012-5SS*	5"	1	6" x 12"
PBRAC6018-4SS*	4"	1	18" x 6"

\*Bolt-on

\*\*Bolt-on, Double wall



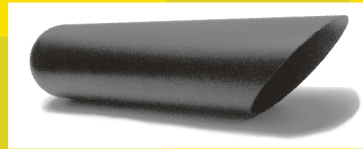
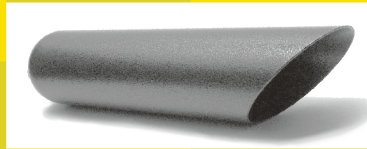
## Turn Down Tips

Part #	Inlet Size (ID)	# Per Box	Overall Size (OD)
PTD300SS	3"	10	16" x 3"
PTD312SS	3.5"	10	16" x 3.5"
PTD400SS	4"	10	18" x 4"



## Product Description:

New textured powder-coated tips. Greater durability than chrome.



### Jones Black Vein & Silver Vein Tips

Part #	Description	Overall Size (OD)
JAC316-BV	2" Inlet Black Vein Angle Cut	16" x 3"
JAC316-SV	2" Inlet Silver Vein Angle Cut	16" x 3"
JAC31212-BV	2.25" Inlet Black Vein Angle Cut	12" x 3.5"
JAC31212-SV	2.25" Inlet Silver Vein Angle Cut	12" x 3.5"
IRAC31212-BV	2.25" Inlet Black Vein Rolled Angle	12" x 3.5"
IRAC31212-SV	2.25" Inlet Silver Vein Rolled Angle	12" x 3.5"
JAC31218-BV	2.25" Inlet Black Vein Angle Cut	18" x 3.5"
JAC31218-SV	2.25" Inlet Silver Vein Angle Cut	18" x 3.5"
IRAC31218-BV	2.25" Inlet Black Vein Rolled Angle	18" x 3.5"
JAC412-BV	2.25" Inlet Silver Vein Rolled Angle	12" x 4"
IRAC412-BV	2.5" Inlet Black Vein Angle Cut	12" x 4"
JAC418-SV	2.5" Inlet Silver Vein Angle Cut	18" x 4"

Other sizes available via special order

## Product Description:

Known in the plating industry as Black Chrome and called Black Pearl by others, our "Midnight Pearl" exhaust tips are tank plated with a special version of our nickel plating which results in a dark mirrored image.

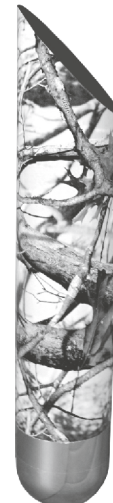
Because we use more nickel plating than any of our competitors, combined with the unique plating, hardening and clear coating process, we have produced a top quality tip that is both durable and long-lasting.

Available in 4 Popular Sizes



### Midnight Pearl Exhaust Tips

Part #	Inlet (ID)	Overall (OD)	Style
JAC316-MP	2"	16" x 3"	Angle Cut
JAC31218-MP	2.25"	18" x 3.5"	Angle Cut
IRAC31218-MP	2.25"	18" x 3.5"	Rolled Angle Cut
JAC418-MP	2.5"	18" x 4"	Angle Cut



## Camo Tip!

Part number  
JAC31218-C

2.25 (inlet)  
18 x 3.5 overall

**Camo Pattern is Vista**

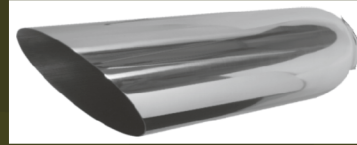
\*Not recommended for V-8 engines unless equipped with dual exhaust.





# Stainless Steel Exhaust Tips

J243518AC15	2-1/4" X 3-1/2" X 18"
J244012AC	2-1/4 X 4" X 12" ANGLE
J304012AC *	3" X 4" X 12" ANGLE
J244018AC	2-1/4" X 4" X 18" ANGLE
J304018AC	3" X 4" X 18" ANGLE
J254022AC	2-1/2" X 4" X 22" ANGLE
J254022AC15	2-1/2" X 4" X 22" ANGLE
J304022AC	3" X 4" X 22" ANGLE
J8912AC *	4" X 5" X 12" ANGLE
J8915AC	4" X 5" X 15" ANGLE
J9012AC	5" X 6" X 12" ANGLE
J8015AC	4" X 6" X 15" ANGLE
J9015AC	5" X 6" X 15" ANGLE
J407015AC	4" X 7" X 15" ANGLE
J507015AC	5" X 7" X 15" ANGLE
J508015AC	5" X 8" X 15" ANGLE



\* Some tips are available with 15 degree angles



J8912ACB	4" X 5" X 12" ANGLE BOLT
J8015ACB	4" X 6" X 15" ANGLE BOLT
J9015ACB	5" X 6" X 15" ANGLE BOLT
J8018ACB	4" X 6" X 18" ANGLE BOLT
J407015ACB	4" X 7" X 15" ANGLE BOLT
J407018ACB	4" X 7" X 18" ANGLE BOLT
J408015ACB	4" X 8" X 15" ANGLE BOLT
J508015ACB	5" X 8" X 15" ANGLE BOLT
J408018ACB	4" X 8" X 18" ANGLE BOLT

J4718AC	2-1/4" X 3-1/2" X 18" Angle w/Neck
PACN31218-212SS	2-1/2" X 3-1/2" X 18" Angle w/Neck
J4722AC	2-1/4" X 3-1/2" X 22" Angle w/Neck
J4616AC	2-1/4" X 3" X 16" Angle w/Neck
J5818AC-214	2-1/4" x 4" x 18" Angle w/Neck
J5818AC	2-1/2" X 4" X 18" Angle w/Neck
J5818AC-3	3" x 4" x 18" Angle w/Neck
J5822AC	2-1/2" X 4" X 22" Angle w/Neck
J4515AC	4" X 5" X 15" Angle w/Neck
J5615AC	5" X 6" X 15" Angle w/Neck



JST014 2-1/2" X 4 1/2" x 7" Slant w/Neck



All Part Description are written in ID X OD X Length

## BLACK CHROME

J243518AC2  
J244018AC2

2-1/4" X 3-1/2" X 18" Angle Cut  
2-1/4" X 4" X 18" Angle Cut



J4718ACK

2-1/4" X 3-1/2" X 18" Black Powder

JST027EK

2 1/2" X 8" X 2 1/4" CAMARO Slant Black Powder



PCAMS214SS-6  
PCAMS214SS  
JST027E  
JST027D  
JST027DK

2-1/4" X 6" X 2-1/4"  
2-1/4" X 8" X 2-1/4"  
2-1/2" X 8" X 2-1/4"  
2-1/2" X 6" X 2 -1/4"  
2-1/2" X 6" X 2 -1/4" Black Powder

JST027D2

2 1/2" X 6" X 2 1/4" CAMARO Straight Black Chrome



PCAM214SS  
PCAM234SS

2-1/4" X 7-3/4" X 2-1/4" X 10"  
2-3/4" X 7-3/4" X 2-1/4" X 10"  
CAMARO Straight

JST027R

2-1/2" X 8" X 2 1/4" CAMARO Right Side Inlet



JST027H

2-1/2" X 8" X 2 1/4" CAMARO Straight

JST027G

2 1/2" X 6" X 2 1/4" CAMARO Straight



JST027E2

2-1/2" X 8" X 2 1/4" CAMARO Straight Black Chrome

*\* All Camaro Style Tips are seamless*



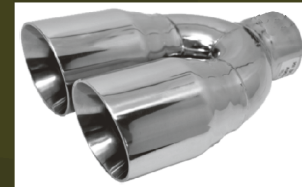
# Stainless Steel Exhaust Tips



**JST121**

**2 1/4" X 5 1/2" X 3 1/2" X 14  
Double Wall Dual Oval**

**JST123 2-1/2" x 3-1/2" x 9.5" Double-Wall Dual Round Slant**



**JST080**

**3"X 3" X 13" Double Wall Dual Slant**

**2 1/4" x 5 1/2" x 3 3/8" x 11 1/2"  
JST120R S.S.DUAL"D" RIGHT  
JST120L S.S.DUAL"D" LEFT**



**JST130**

**3"X4"x16" Dual Oval**

**JST048**

**2 1/4" x 3" X 10" Double Wall Round Turn Up**



**JST084**

**2 1/4" x 3" x 9" Dual Oval Slant**

**JST026S**

**2-1/4" X 3-1/2" X 12" DUAL Round Rolled**



**JST0792**

**2-1/4" x 3-1/2' x 3" x 9" Dual Oval Slant Black Chrome**

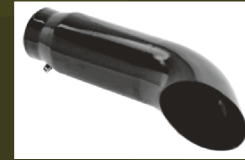


**J6715TD  
J405015TD**

**3" X 3-1/2" X 15" Turn Down  
4" X 5" X 15" Turn Down**

**J405015TDBK**

**4" X 5" X 15" Turn Down Black Powder**



**J3409TD  
J5612TD  
J4509TD**

**2" X 2-1/4" X 9"  
2-1/2" X 2-3/4" X 9"  
2-1/4" X 2-1/2" X 9"**

**Turn Down  
Turn Down  
Turn Down**

**JST132**

**2-1/4" X 3-1/2" X 7" Round Rolled Slant**



**J8912PT**

**4" X 5" X 12" Bolt Pencil**

**J405012PT**

**4" X 5" X 12" Rolled Pencil**



**JST139**

**2-1/2" X 4" X 5" Double Wall Angle**

**JST140**

**3" X 4" X 5" Double Wall Angle**



**JST538NS**

**4" X 5" X 13" Double Wall Bolt Angle**

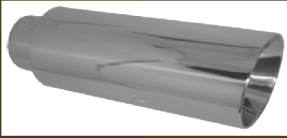
**JST051**

**2-1/4" X 4-1/2" X 8" Double Wall Cobweb**





# Stainless Steel Exhaust Tips



**JST013B12**

**2-1/4" X 3 -1/2" X 12" Double Wall Angle**

**JST013B16**  
**JST25013B16**

**2-1/4" X 3-1/2" X 16" Double Wall Angle**  
**2-1/2" X 3-1/2" X 16" Double Wall Angle**



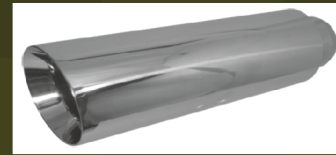
**JST040**

**2-1/4" X 3-3/4" X 7" Double Wall Oval**

**JST013A12**  
**JST013A16**  
**JST013A**  
**JST25013C16**

**2-1/4" X 3" X 12**  
**2-1/4" X 3" X 16"**  
**2-1/4" X 3" X 8"**  
**2-1/2" X 4" X 16"**

**Double Wall Oval Slant**



**JST30013C12**  
**JST30013C12K**  
**JST30013C16**  
**JST40013D12**

**3" X 4" X 12" Double Wall Angle**  
**3" X 4" X 12" Double Wall Angle Black Powder**  
**3" X 4" X 16" Double Wall Angle**  
**4" X 5" X 12" Double Wall Angle**

**JST116**

**2 1/4" X 4 1/2" X 3 1/2" X 6" Double Wall Oval**



**JST039B**

**2-1/4" X 5-1/2" x 3-1/2" X 12"**  
**Double Wall Rolled Oval**



**JST006**

**2-1/4" X 3 1/2" X 8" Double Wall Resonated Tip**

**JST075**

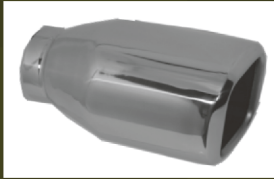
**2-1/4" X 4" X 9" Double Wall Rolled Round**



**JST009**  
**JST133**  
**JST136A**  
**JST136B**  
**JST136C**

**2-1/4" X 3" X 7"**  
**2-1/4" X 3-1/2" X 4"**  
**2-1/4" X 3" X 8"**  
**2-1/4" X 3-1/2" X 8"**  
**2-1/4" X 4" X 8"**

**Double Wall Straight**  
**Double Wall Straight**  
**Double Wall Slant**  
**Double Wall Slant**  
**Double Wall Slant**



**JST042**  
**JST041**

**2-1/2" x 3-1/2" x 3 x 7 Double Wall Slant Square**  
**2-1/4" x 3-3/4" x 3 x 7 Double Wall Soft Square**

**JST070**

**2-1/4" X 4" X 3-1/2" X 7" Double Wall Square**

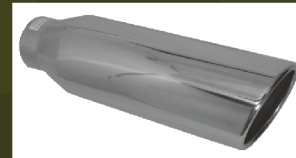


**JST093**

**1-3/4" X 2-1/2" X 5**  
**Foreign Double Wall Round**

**JST053**

**2-1/4" X 3-3/4" X 3-1/2" X 6-1/2"**  
**Rolled Oval Slant**



**JST007A**  
**J243512PT**  
**J253518PT**  
**J243518PT**  
**J243522PT**

**1-3/4" X 2 X 10"**  
**2-1/4" X 3-1/2" X 12"**  
**2-1/2" X 3-1/2" X 18**  
**2-1/4" X 3-1/2" X 18**  
**2-1/2" X 3-1/2" X 22**

**JST081**

**2-1/4" X 6" X 2-1/2" X 9" Rolled Oval Angle**



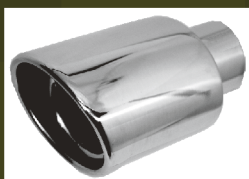
**JST043S2**

**2-1/4" X 6" X 9"**  
**Oval Rolled Slant**

**Black Chrome**

**JST081K**

**2-1/4" X 6" X 2-1/2" X 9"**  
**Rolled Oval Angle Black Powder**

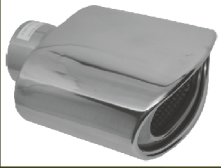


**JST062**

**2-1/4" X 4-1/2" X 3-3/4" X 7"**  
**Rolled Oval Resonated Slant**



# Stainless Steel Exhaust Tips

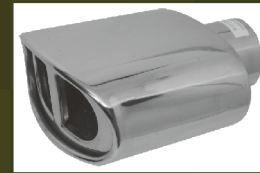


**JST119**

**2 1/4" X 5-1/2" x 2 3/4" X 7" Double Wall Resonated Oval**

**JST118**

**2 1/4" X 5-1/2" x 2 3/4" X 7" Resonated Oval**



**JST090**

**3" X 4-1/4" X 1 3/4" X 14" MOPAR Oval Slant**

**JST091**

**2-1/4" X 3-3/4" x 1 3/4" x 17" MOPAR Rectangle Slant**



**J7815RAB  
J6815RAB  
J8915RAB  
J8015RAB  
J9015RAB**

**3-1/2 X 4 X 12" Rolled Angle- BOLT  
3 X 4 X 15" Rolled Angle-BOLT  
4 X 5 X 15" Rolled Angle -BOLT  
4 X 6 X 15" Rolled Angle- BOLT  
5 X 6 X 15" Rolled Angle- BOLT**

**J253512RAC  
J303512RAC  
J243012RAC  
J243522RAC  
J354012RAC  
J304012RAC  
J304015RAC  
J244018RAC  
J355012RAC  
J405014RAC  
J355015RAC  
J405018RAC  
J506012RAC  
J406015RAC  
J506015RAC  
J406018RAC  
J506018RAC  
J407015RAC  
J507015RAC**

**2-1/2" X 3-1/2" X 12  
3" X 3-1/2" X 12"  
2-1/4" X 3" X 12"  
2-1/4" X 3-1/2" X 22"  
3-1/2" X 4" X 12"  
3" X 4" X 12"  
3" X 4" X 15"  
2-1/4" X 4" X 18"  
3-1/2" X 5 X 12"  
4" X 5" X 14"  
3-1/2" X 5 X 15"  
4" X 5" X 18"  
5" X 6" X 12"  
4" X 6" X 15"  
5" X 6" X 15"  
4 X 6 X 18"  
5" X 6" X 18"  
4 X 7 X 15"  
5 x 7 x 15"**

**Rolled Angle  
Rolled Angle  
Rolled Angle  
Rolled Angle  
Rolled Angle  
Rolled Angle  
Rolled Angle  
Rolled Angle  
Rolled Angle  
Rolled Angle  
Rolled Angle  
Rolled Angle  
Rolled Angle  
Rolled Angle  
Rolled Angle  
Rolled Angle  
Rolled Angle  
Rolled Angle  
Rolled Angle  
Rolled Angle  
Rolled Angle**



**J506014RAC**

**5" X 6" X 14" Rolled Angle Vented**

**J405014RACB 4" X 5" X 14" Rolled Bolt**  
**J407015RACB 4" X 7" X 15" Rolled Bolt**  
**J407018RACB 4" X 7" X 18" Rolled Bolt**  
**J408015RACB 4" X 8" X 15" Rolled Bolt**  
**J408018RACB 4" X 8" X 18" Rolled Bolt**  
**J507015RACB 5" X 7" X 15" Rolled Bolt**  
**J507018RACB 5" X 7" X 18" Rolled Bolt**  
**J508015RACB 5" X 8" X 15" Rolled Bolt**  
**J508018RACB 5" X 8" X 18" Rolled Bolt**  
**J401015RACB 4" X 10" X 15" Rolled Bolt**  
**J401018RACB 4" X 10" X 18" Rolled Bolt**  
**J501015RACB 5" X 10" X 15" Rolled Bolt**  
**J501018RACB 5" X 10" X 18" Rolled Bolt**



**J406015RACBK 4X6X15 BOLT Black Powder**  
**J506015RACBK 5X6X15 BOLT Black Powder**  
**J407018RACBK 4X7X18 BOLT Black Powder**  
**J408018RACBK 4X8X18 BOLT Black Powder**  
**J407015RACBK 4X7X15 BOLT Black Powder**  
**J507015RACBK 5X7X15 BOLT Black Powder**  
**J408015RACBK 4X8X15 BOLT Black Powder**  
**J508015RACBK 5X8X15 BOLT Black Powder**



## Rolled Angle



**J303512RACK 3 X 3-1/2 X 12**  
**J243518RAC2 2-1/4" X 3-1/2" X 18"**  
**J243522RAC2 2-1/4" X 3-1/2" X 22"**  
**J243016RAC2 2-1/4" X 3" X 16"**  
**J304012RACK 3" X 4" X 12"**  
**J506015RACK 5" X 6" X 15"**

**Black Powder**  
**Black Chrome**  
**Black Chrome**  
**Black Chrome**  
**Black Powder**  
**Black Powder**

**J244012RAC 2 1/4" X 4" X 12" ROLLED ANGLE**  
**J4712RAC 2-1/4" X 3-1/2" X 12" ROLLED ANGLE**  
**J4718RAC 2-1/4" X 3-1/2" X 18" ROLLED ANGLE**  
**PRACN31218-212SS 2-1/2" X 3-1/2" X 18" ROLLED ANGLE**  
**J4722RAC 2-1/4" X 3-1/2" X 22" ROLLED ANGLE**  
**J4616RAC 2-1/4" X 3" X 16" ROLLED ANGLE**  
**J5809RAC 2-1/2" X 4" X 9" ROLLED ANGLE**  
**J5812RAC 2-1/2" X 4" X 12" ROLLED ANGLE**  
**J5818RAC 2-1/2" X 4" X 18" ROLLED ANGLE**  
**J4515RAC 4" X 5" X 15" ROLLED ANGLE**  
**J5615RAC 5" X 6" X 15" ROLLED ANGLE**



**J4616RACK 2-1/4" X 3" X 16" Black Powder**  
**J5809RACK 2-1/2" X 4" X 9" Black Powder**  
**J5812RACK 2-1/2" X 4" X 12" Black Powder**  
**J4712RACK 2-1/4" X 3-1/2" X 12" Black Powder**  
**J4718RACK 2-1/4" X 3-1/2" X 18" Black Powder**  
**J244018RAC2 2-1/4" X 4" X 18" Black Chrome**  
**J5818RACK 2-1/2" X 4" X 18" Black Powder**

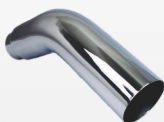


# SS SPECIALTY PARTS

www.jonesexhaust.com



**J506015RBK**



**JCM405099**



**JCM506099**



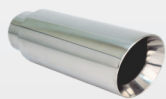
**JDT013B**



**JDT013C**



**JDT24013BDL**



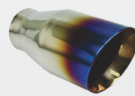
**JDT24013C12**



**JDT24017AC**



**JDT24017ACBK**



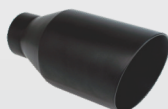
**JDT24017BF**



**JDT24096L**



**JDT24113C**



**JDT24113CBK**



**JDT24156LBF**



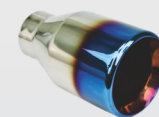
**JDT24156LBK**



**JDT24156RBF**



**JDT24156RBK**



**JDT24158BF**



**JDT24161BF**



**JDT25083**



**JDT25083L**



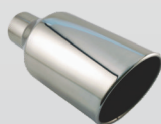
**JDT25083R**



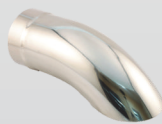
**JDT25101**



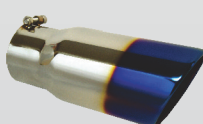
**JST11070B**



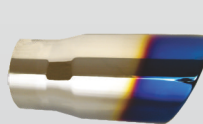
**J408018RSL**



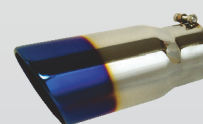
**J505016TD**



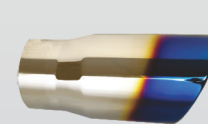
**PBRAC6012-5BF**



**PRACN6012-5BF**



**PBRAC5012-4BF**



**PRACN5012-4BF**

**J506015RBK** 5" ID X 6" OD X 15" OVERALL LENGTH BLACK POWDER COATED 6" ROLLED SLANT

**JCM405099** 4" ID X 5" OD X 23" OVERALL LENGTH ELBOW

**JCM506099** 5" ID X 6" OD X 23" OVERALL LENGTH ELBOW

**JDT013B** 2.25" ID X 3.5" OD X 8" OVERALL LENGTH OPEN CASING SLANTED DOUBLE WALL

**JDT013C** 2.25" ID X 4" OD X 8" OVERALL LENGTH OPEN CASING SLANTED DOUBLE WALL

**JDT24013BDL** 2.25" ID X 7.75" OD X 3.5" X 9.5" OVERALL LENGTH DUAL 3.5" DOUBLE WALL ANGLE

**JDT24013C12** 2.25" ID X 4" OD X 12" OVERALL LENGTH OPEN CASING SLANTED DOUBLE WALL

**JDT24017AC** 2.25" ID X 3.5" OD X 7" OVERALL LENGTH 3.5" ANGLE DOUBLE WALL

**JDT24017ACBK** 2.25" ID X 3.5" OD X 7" OVERALL LENGTH BLACK POWDER COATED 3.5" ANGLE DOUBLE WALL

**JDT24017BF** 2.25" ID X 3.5" OD X 7" OVERALL LENGTH ANGLE DOUBLE WALL WITH BLUE FLAME

**JDT24096L** 2.25" ID X 6.25" OD X 3" X 8.5" OVERALL LENGTH DUAL 3" DOUBLE WALL STAGGERED ANGLE TIP

**JDT24113C** 2.25" ID X 4" OD X 8" OVERALL LENGTH DOUBLE WALL CLOSED OUTER CASING

**JDT24113CBK** 2.25" ID X 4" OD X 8" OVERALL LENGTH BLACK POWDER COATED DOUBLE WALL CLOSED OUTER CASING

**JDT24156LBF** 2.25" ID X 7.25" OD X 3.5" X 9.5" OVERALL LENGTH DUAL 3.5" DOUBLE WALL STAGGERED ROLLED SLANT WITH BLUE FLAME

**JDT24156LBK** 2.25" ID X 7.25" OD X 3.5" X 9.5" OVERALL LENGTH BLACK POWDER COATED DUAL 3.5" DOUBLE WALL STAGGERED ROLLED SLANT

**JDT24156RBF** 2.25" ID X 7.25" OD X 3.5" X 9.5" OVERALL LENGTH DUAL 3.5" DOUBLE WALL STAGGERED ROLLED SLANT WITH BLUE FLAME

**JDT24156RBK** 2.5" ID X 7.25" OD X 3.5" X 9.5" OVERALL LENGTH BLACK POWDER COATED DUAL 3.5" DOUBLE WALL STAGGERED ROLLED SLANT

**JDT24158BF** 2.25" ID X 4" OD X 7" OVERALL LENGTH DOUBLE WALL ANGLE WITH BLUE FLAME

**JDT24161BF** 2.25" ID X 7.25" OD X 3.5" X 9.5" OVERALL LENGTH DUAL 3.5" DOUBLE WALL ROLLED SLANT WITH BLUE FLAME

**JDT25083** 2.5" ID X 6.25" OD X 3" X 9.5" OVERALL LENGTH DUAL PARALLEL 3" DOUBLE WALL ANGLE TIP

**JDT25083L** 2.5" ID X 6.25" OD X 3" X 9.5" OVERALL LENGTH DUAL 3" DOUBLE WALL STAGGERED ANGLE TIP

**JDT25083R** 2.5" ID X 6.25" OD X 3" X 9.5" OVERALL LENGTH DUAL 3" DOUBLE WALL STAGGERED ANGLE TIP

**JDT25101** 2.5" ID X 4" OD X 5.25" OVERALL LENGTH DOUBLE WALL ANGLE

**JST11070B** 4" ID X 5" OD X 23" OVERALL LENGTH ELBOW INLET VENTED BOLT

**J408018RSL** 4" ID X 8" OD X 18" OVERALL LENGTH ROLLED SLANT

**J505016TD** 5" ID X 5" OD X 16" OVERALL LENGTH BOLT ON/WELD ON TURNDOWN

**PBRAC6012-5BF** 6" OD x 12" length 5" ID Inlet Bolt On

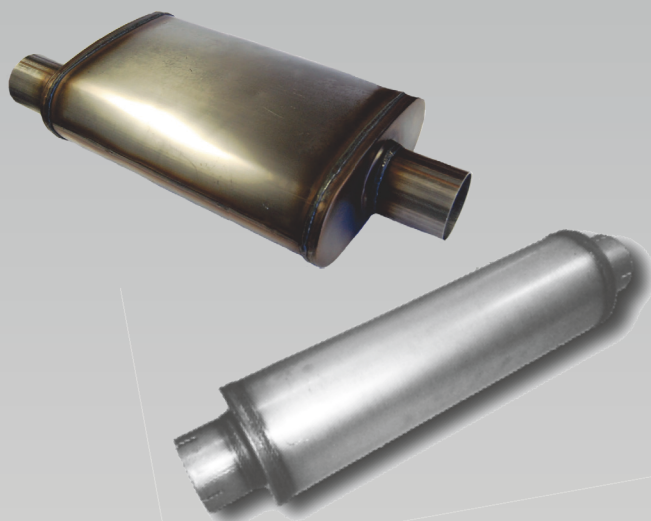
**PRACN6012-5BF** 6" OD x 12" Length 5" ID Inlet Weld On

**PBRAC5012-4BF** 5" OD x 12" length 4" ID Inlet Bolt On

**PRACN5012-4BF** 5" OD x 12" length 4" ID Inlet Weld On



# MAX FLOW



## 409 STAINLESS STEEL UNIVERSAL MUFFLER ALL MUFFLERS ARE REVERSABLE

### Aluminized Muffler Installation Stand

Makes muffler installation  
much easier!

Muffler installations are now  
easier using the NEW muffler  
installation stand from  
Jones Exhaust.

The stand is made of 16 gauge  
aluminized steel and will extend  
upward to a height of 7 feet.

**Part # JMS1**



Jones Exhaust: 100% Fullfillment  
of Orders and Expectations



#### 4 X 9 OVAL 14" MUFFLER 20" OVERALL

MF1224	2" x 2" OFFSET/CENTER
MF1225	2 1/4" X 2 1/4" OFFSET/CENTER
MF1226	2 1/2" X 2 1/2" OFFSET/CENTER
MF1229	3" X 3" OFFSET/CENTER
MF1234	2" X 2" OFFSET/OFFSET
MF1235	2 1/4" X 2 1/4" OFFSET/OFFSET
MF1236	2 1/2" X 2 1/2" OFFSET/OFFSET

#### 4 X 9 OVAL 18" MUFFLER 24" OVERALL

MF1255	2 1/4" X 2 1/4" OFFSET/CENTER
MF1256	2 1/2" X 2 1/2" OFFSET/CENTER
MF1259	3" X 3" OFFSET/CENTER
MF1265	2 1/4" X 2 1/4" OFFSET/OFFSET
MF1266	2 1/2" X 2 1/2" OFFSET/OFFSET

#### 5" X 8" OVAL 18" MUFFLER 24" OVERALL

MF2255	2 1/4" X 2 1/4" OFFSET/CENTER
MF2256	2 1/2" X 2 1/2" OFFSET/CENTER
MF2259	3" X 3" OFFSET/CENTER

#### 5" X 8" OVAL 24" MUFFLER 30" OVERALL

MF2289	3" X 3" OFFSET/CENTER
--------	-----------------------

#### 5 X 8 OVAL 14" MUFFLER 20" OVERALL

MF2149	2 1/4" X 2 1/4" CENTER/DUAL
MF2158	2 1/2" X 2 1/2" CENTER/DUAL
MF2198	3" X 2 1/2" CENTER/DUAL

#### 5" X 8" OVAL 18" MUFFLER 24" OVERALL (Camaro)

MF2265	2 1/2" X 2 1/2" OFFSET/DUAL
--------	-----------------------------

#### 5 X 8 OVAL 18" MUFFLER 24" OVERALL

MF2251	2 1/2" X 2 1/4" CENTER/DUAL
MF2267	2 1/2" OFFSET/3 & 2 1/2" DUAL
MF2268	2 1/2" X 2 1/2" CENTER/DUAL
MF2278	3" X 2 1/4" CENTER /DUAL
MF2288	3" X 2 1/2" CENTER/DUAL
MF2298	3" X 3" CENTER/DUAL

#### 5 X 8 OVAL 18" MUFFLER 24" OVERALL

MF2468	2 1/2" X 2 1/2" DUAL/DUAL
MF2469	3" X 3" DUAL/ DUAL

#### 5 X 11 OVAL 22" MUFFLER 28" OVERALL

MF2589	3" X 3" OFFSET/CENTER
MF2588	3" X 2 1/2" CENTER/DUAL
MF2579	3" X 3" CENTER/CENTER
MF2590	3" X 3" CENTER/DUAL

#### 5 X 11 OVAL 22" MUFFLER 28" OVERALL

MF2568	2 1/2" X 2 1/2" DUAL/DUAL
--------	---------------------------

#### 4 X 14 ROUND 14" MUFFLER 20" OVERALL

JXS0445	2 1/4" X 2 1/4" CENTER
JXS0416	2 1/2" X 2 1/2" CENTER
JXS0419	3" X 3" CENTER

#### 4 X 18 ROUND 18" MUFFLER 24" OVERALL

JXS0425	2 1/4" X 2 1/4" CENTER
JXS0426	2 1/2" X 2 1/2" CENTER

#### 7 X 24 ROUND 24" MUFFLER 30" OVERALL

JXS2772	4" X 4" CENTER
---------	----------------



# Performance Mufflers

## Single Chamber Race Mufflers

PERFORMANCE MUFFLERS  
SINGLE CHAMBER RACE MUFFLERS  
FLOW DEFLECTOR DIRECTIONAL




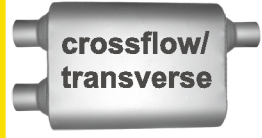



4" X 9" Ovals / 13" Body & 19" Overall

### Design Improvements:





- \*\* 16 gauge aluminized outer shell
- \*\* 16 gauge aluminized baffles & end caps
- \*\* 16 gauge aluminized necks
- \*\* 100% mig welded for extra durability
- \*\* Flow Deflector Technology

### Performance & Sound Technology:

- Allows for maximum flow & power gains.
- Produces a sound that is powerful & aggressive.
- Durable & Economical. The Sound your customer craves

	Inlet I.D.		Outlet I.D.		Inlet I.D.		Outlet I.D.
	2"	FB2042	2"		2.25"	FB4422	(2) 2.25"
	2.25"	FB2442	2.25"		2.5"	FB5422	(2) 2.25"
	2.5"	FB2542	2.5"		2.5"	FB5402	(2) 2.5"
	3"	FB3042	3"		3"	FB0422	(2) 2.25"
	2"	FB2043	2"		Available only in 15" body and 21" overall length		
	2.25"	FB2443	2.25"		2.5"	FB2583	(2) 2.5"
	2.5"	FB2543	2.5"				
	3"	FB3043	3"				
	2"	FB2041	2"		2.25"	FB2440	2.25"
	2.25"	FB2441	2.25"		2.5"	FB2540	2.5"
	2.5"	FB2541	2.5"				
	3"	FB3041	3"				
	2.25"	FB4134	2.25"				

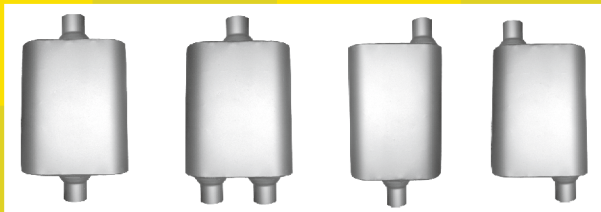
### 4" x 9" With 17" & 23" Overall

	FB3051 3" Offset / Center
	FB4554 Dual 2.25" / 2.25"
	FB4553 Dual 2.25" / 3" Center
	FB3052 3" Center / Offset

### Single Chamber Race Mufflers

4" X 9" Oval, 6.5" Body, 13" Overall  
Part Numbers

<b>FB425</b> 2.5" ID Inlet 2.25" ID Dual Outlets	<b>FB426</b> 2.5" ID Inlet 2.5" ID Outlet Center - Center	<b>FB427</b> 3" ID Inlet 2.5" ID Dual Outlets
<b>FB428</b> 3" ID Inlet 3" ID Outlet Center - Center	<b>FB429</b> 3" ID Inlet 2.25" ID Dual Outlets	<b>FB430</b> 2.25" ID Inlet 2.25" ID Outlet Offset / Offset
<b>FB431</b> 2.25" ID Inlet 2.25" ID Outlet Offset - Center	<b>FB432</b> 2.5" ID Inlet 2.5" ID Dual Offset - Center	<b>FB433</b> 2.5" ID Inlet 2.5" ID Outlet Offset / Offset



All Welded 16 Gauge Aluminized  
Steel Single Chamber Design.

# Full Boar Performance Mufflers

## Full Flow Truck Series Large-Body Mufflers



### Full Flow

5" x 11" Oval - 19.5" Body x 25" Overall - 3" Cores



2.25"	F523A	2.25"
2.5"	F524A	2.5"
2.75"	F525A	2.75"
3"	F526A	3"



2.5"	F524B	2.5"
2.75"	F525B	2.75"
3"	F526B	3"



2.5"	F524C	2.5"
3"	F526C	3"



Can be used for a crossflow transverse muffler

2.25"	F523E	2.25"
2.5"	F524E	2.5"



3"	F5264F	2.5"
----	--------	------



3"	F5263G	2.25"
----	--------	-------

### Full Flow

5" x 11" Oval - 22.5" Body x 29" Overall - 3" Cores



2.75"	F535A	2.75"
3"	F536A	3"



2.75"	F535B	2.75"
3"	F536B	3"



3"	F5362C	2"
3"	F5363C	2.25"
3"	F5364C	2.5"
3"	F536C	3"



Can be used for a crossflow transverse muffler

2.5"	F534E	2.5"
------	-------	------



2.25"	F533F	2.25"
-------	-------	-------

### ROUND Full Flow Performance Mufflers

Full Boar large body and large core performance mufflers are designed specifically for gas, diesel truck, big block SUVs and motor home applications. They can significantly improve acceleration and towing power while simultaneously increasing fuel economy up to four miles per gallon in some motor home and diesel truck applications.



#### 6" Round

Inlet	Item ID	Outlet	Body Length	Overall Length
2.5"	F626-4D	2.5"	26.5"	33"
3"	F626-6D	3"	26.5"	33"
3.5"	F626-7D	3.5"	26.5"	33"
4"	F624-8D	4"	24"	29"
4"	F626-8D	4"	26.5"	33"

#### 7" Round

Inlet	Item ID	Outlet	Body Length	Overall Length
3"	F726-6D	3"	26.5"	33"
3.5"	F726-7D	3.5"	26.5"	33"
4"	F726-8D	4"	26.5"	33"

#### 8" Round

Inlet	Item ID	Outlet	Body Length	Overall Length
4"	F824-8D	4"	24"	30"
5"	F824-9D	5"	24"	30"
3"	F830-6D	3"	30"	36"
3.5"	F830-7D	3.5"	30"	36"
4"	F830-8D	4"	30"	36"

Straight Through Louvered Core Design!  
ALL Units Are 100% Reversible

### DIESEL MUFFLERS with PERFORATED CORE



5" X 12"	AP5012S-4	4" ID & CORE
5" X 18"	AP5018S-4	4" ID & CORE

Want performance without the sound? See our "Quiet Tone" Full Performance Mufflers!

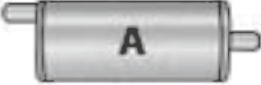
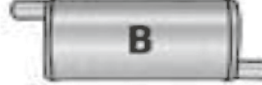
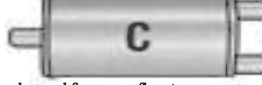
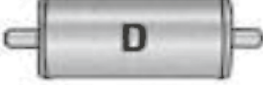




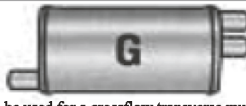

# Full Boar Performance Mufflers


V-Power Series (All Units Reversible)

This patented “flow deflector” technology provides superior flow of exhaust gases and results in increased horsepower, torque, and fuel economy. All with the sound you crave!

## 4" x 9.75" Oval - 13" Body x 18.5" Overall

														
1.75"	V411A	1.75"	1.75"	V411B	1.75"	Can be used for a crossflow transverse muffler			2"	V412C	2"	2"	V412D	2"
2"	V412A	2"	2"	V412B	2"	2.25"	V4132C	2"	2.25"	V413D	2.25"	2.25"	V413D	2.25"
2.25"	V413A	2.25"	2.25"	V413B	2.25"	2.25"	V413C	2.25"	2.5"	V414D	2.5"	2.5"	V414D	2.5"
2.5"	V414A	2.5"	2.5"	V414B	2.5"	2.25"	V4134C	2.5"	3"	V416D	3"	3"	V416D	3"
2.75"	V415A	2.75"	2.75"	V415B	2.75"	2.5"	V4142C	2"	3.5"	V417D	3.5"	3.5"	V417D	3.5"
3"	V416A	3"	3"	V416B	3"	2.5"	V4143C	2.25"						
3.5"	V417A	3.5"	3.5"	V417B	3.5"	2.5"	V414C	2.5"						
						3"	V4162C	2"						
						3"	V4163C	2.25"						
						3"	V4164C	2.5"						
						3"	V416C	3"						

														
2.25"	V413E	2.25"	2.25"	V413F	2.25"	Can be used for a crossflow transverse muffler			2.25"	V4132G	2"	2.5"	V414R	2.5"
2.5"	V4143E	2.25"	2.5"	V414F	2.5"									
2.5"	V414E	2.5"												
3"	V416E	3"												

		
2.25"	V4132T	2"
2.25"	V4134T	2.5"
2.5"	V4143T	2.25"
3"	V4164T	2.5"

The Only Performance Muffler in the Industry That Utilizes “Flow Deflector” Technology & is 100% Reversible!

# Full Boar Heavy Duty Aluminized Mufflers



## Quiet Tone Oval Heavy Duty Muffler

Full Boar Quiet Tone Series Offers The Benefits Of Performance Without The Noise!

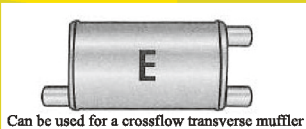
- Mild exhaust tone, incorporating baffle designs to produce reduced interior sound levels.

- Great for tow vehicles, SUVs, vans and late-model trucks where sound control is as important as horsepower development.



A					4" x 9.75" Oval					C				
ID	Part #	ID	Body	Overall	ID	Part#	ID	Body	Overall	ID	Part #	ID	Body	Overall
1.75"	Q411A	1.75"	13"	18.5"	1.75"	Q411B	1.75"	13"	18.5"	2.25"	Q413C	2.25"	13"	18.5"
2"	Q412A	2"	13"	18.5"	2"	Q412B	2"	13"	18.5"	2.5"	Q4142C	2"	13"	18.5"
2.25"	Q413A	2.25"	13"	18.5"	2.25"	Q413B	2.25"	13"	18.5"	2.5"	Q4143C	2.25"	13"	18.5"
2.5"	Q414A	2.5"	13"	18.5"	2.5"	Q414B	2.5"	13"	18.5"	2.5"	Q414C	2.5"	13"	18.5"
3"	Q416A	3"	13"	18.5"	3"	Q416B	3"	13"	18.5"	3"	Q4163C	2.25"	13"	18.5"
2.25"	Q523A	2.25"	19.5"	25"						3"	Q4164C	2.5"	13"	18.5"
2.5"	Q524A	2.5"	19.5"	25"										
3"	Q526A	3"	19.5"	25"										
3"	Q5365A	2.75"	22.5"	29"										
3"	Q536A	3"	22.5"	29"										

**All Units Are 100% Reversible!**



Can be used for a crossflow transverse muffler

ID	Part #	ID	Body	Overall
2.5"	Q414E	2.5"	13"	18.5"1

ID	Part #	ID	Body	Overall
2.25"	Q523E	2.25"	19.5"	25"
2.5"	Q524E	2.5"	19.5"	25"

### 5" x 11" Oval

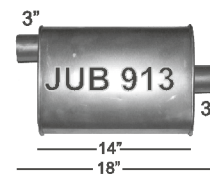
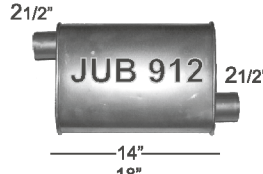
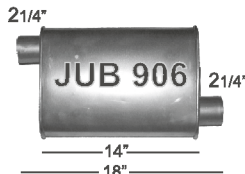
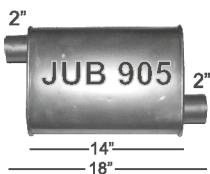
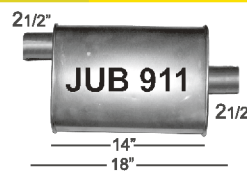
ID	Part#	ID	Body	Overall	ID	Part #	ID	Body	Overall
2.5"	Q524B	2.5"	19.5"	25"	2.5"	Q524C	2.5"	19.5"	25"
3"	Q526B	3"	19.5"	25"	3"	Q5263C	2.25"	19.5"	25"
3"	Q536B	3"	22.5"	29"	3"	Q526C	3"	19.5"	25"
					2.75"	Q5353C	2.25"	22.5"	29"
					3"	Q5362C	2"	22.5"	29"
					3"	Q5363C	2.25"	22.5"	29"
					3"	Q5364C	2.5"	22.5"	29"
					3"	Q536C	3"	22.5"	29"

### 4" x 9.75" Oval



### 5" x 11" Oval

ID	Part#	ID	Body	Overall	ID	Part#	ID	Body	Overall
3"	Q5264F	2.5"	19.5"	25"					
2"	Q532F	2"	22.5"	29"					
2.25"	Q533F	2.25"	22.5"	29"					



## 4" X 9" TURBO

OFFSET / CENTER  
3 TUBE / 2 BAFFLE  
WELDED NIPPLES  
ALUMINIZED  
DOUBLE WRAPPED



# Full Boar Heavy Duty Aluminized Mufflers

## Round Super Duty Mufflers

100% Aluminized • 100% Reversible Guaranteed • Performance NOT Affected

### Numbering System

Series

SD = Super Duty

Sample Part #: **SD 7 26 6 4 C**

Body Style

4 = 4" Case Dia. 7 = 7" Case Dia.  
6 = 6" Case Dia. 8 = 8" Case Dia.

Body Length

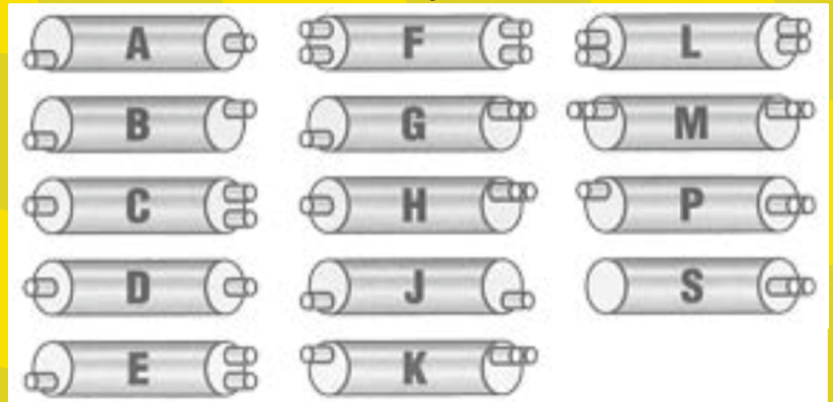
12 = 12" Body 30 = 30" Body  
18 = 18" Body  
26 = 26.5" Body

Neck Diameter (measured at ID)

1 = 1.75" 5 = 2.75"  
2 = 2" 6 = 3"  
3 = 2.25" 7 = 3.5"  
4 = 2.5" 8 = 4"



Neck Configurations



#### Round Mufflers

Part #	Body Style	ID	ID	Body Length	Overall
MH150	4"	1.5"	1.5"	18"	21"
SD412-3D	4"	2.25"	2.25"	12"	18"
SD614-2D	6"	2"	2"	14"	20"
SD614-3D	6"	2.25"	2.25"	14"	20"
SD626-23B	6"	2"	2.25"	26.5"	33"
SD626-24B	6"	2"	2.5"	26.5"	33"
SD626-2B	6"	2"	2"	26.5"	33"
SD626-34B	6"	2.25"	2.5"	26.5"	33"
SD626-3B	6"	2.25"	2.25"	26.5"	33"
SD626-4B	6"	2.5"	2.5"	26.5"	33"
SD626-2D	6"	2"	2"	26.5"	33"
SD626-3D	6"	2.25"	2.25"	26.5"	33"
SD626-4D	6"	2.5"	2.5"	26.5"	33"
SD626-7D	6"	3.5"	3.5"	26.5"	33"
SD626-8D	6"	4"	4"	26.5"	33"
SD718-3B	7"	2.25"	2.25"	18"	24"
SD718-6B	7"	3"	3"	18"	24"
SD722-8D	7"	4"	4"	22"	28.5"
SD724-8D	7"	4"	4"	24"	30.5"
SD726-34B	7"	2.25"	2.5"	26.5"	33"
SD726-3B	7"	2.25"	2.25"	26.5"	33"
SD726-4B	7"	2.5"	2.5"	26.5"	33"

#### Round Mufflers

Part #	Body Style	ID	ID	Body Length	Overall
SD726-6B	7"	3"	3"	26.5"	33"
SD726-64C	7"	3"	2.5"	26.5"	33"
SD726-4D	7"	2.5"	2.5"	26.5"	33"
SD726-6D	7"	3"	3"	26.5"	33"
SD726-7D	7"	3.5"	3.5"	26.5"	33"
SD726-8D	7"	4"	4"	26.5"	33"
SD726-3F	7"	2.25"	2.25"	26.5"	33"
SD726-4F	7"	2.5"	2.5"	26.5"	33"
SD726-32P	7"	2.25"	2"	26.5"	33"
SD726-4P	7"	2.5"	2.5"	26.5"	33"
SD726-64P	7"	3"	2.5"	26.5"	33"
SD730-35B	7"	2.25"	2.75"	30"	36"
SD824-4B	8"	2.5"	2.5"	24"	30"
SD824-78D	8"	3.5"	4"	24"	30"
SD826-68B	8"	3"	4"	26.5"	33"
SD830-6B	8"	3"	3"	30"	36"
SD830-7D	8"	3.5"	3.5"	30"	36"
SD830-8D	8"	4"	4"	30"	36"
SD830-64G	8"	3"	2.5"	30"	36"
SD830-54G	8"	2.75"	2.5"	30"	39.5"
SD830-54K	8"	2.75"	2.5"	30"	39.5"



### 30 Series (3" Case - 1.75" core, aluminized)

Aluminized Part #	Case Diameter	Case Length	Core Diameter	Overall Length	Neck Inlet	Neck Outlet	Neck Configuration	Package Quantity
A3009B	3"	9"	1.75"	9"			Blank	6
A3009S	3"	9"	1.75"	14"	1.75"	1.75"	Straight	6
A3012B	3"	12"	1.75"	12"			Blank	6
A3012S	3"	12"	1.75"	17"	1.75"	1.75"	Straight	6
A3012S-3	3"	12"	2"	17"	2"	2"	Straight	6
A3015B	3"	15"	1.75"	15"			Blank	6
A3015S	3"	15"	1.75"	20"	1.75"	1.75"	Straight	6
A3018B	3"	18"	1.75"	18"			Blank	6
A3018S	3"	18"	1.75"	23"	1.75"	1.75"	Straight	6
A3022B	3"	22"	1.75"	22"			Blank	6
A3022S	3"	22"	1.75"	27"	1.75"	1.75"	Straight	6
A3026B	3"	26"	1.75"	26"			Blank	6
A3026S	3"	26"	1.75"	31"	1.75"	1.75"	Straight	6

### 35 Series (3.5" case - 2" & 2.25" core, aluminized)

Aluminized Part#	Case Diameter	Case Length	Core Diameter	Overall Length	Neck Inlet	Neck Outlet	Neck Configuration	Package Quantity
A3509B	3.5"	9"	2.25"	9"			Blank	6
A3509S	3.5"	9"	2"	14"	2"	2"	Straight	6
A3509S-5	3.5"	9"	2.25"	14"	2.25"	2.25"	Straight	6
A3512B	3.5"	12"	2.25"	12"			Blank	6
A3512M	3.5"	12"	2.25"	17"	2"	2"	Medium	6
A3512S	3.5"	12"	2"	17"	2"	2"	Straight	6
A3512S-5	3.5"	12"	2.25"	17"	2.25"	2.25"	Straight	6
A3514B	3.5"	14"	2.25"	14"			Blank	6
A3514S	3.5"	14"	2"	19"	2"	2"	Straight	6
A3516B	3.5"	16"	2.25"	16"			Blank	6
A3516M	3.5"	16"	2.25"	21"	2"	2"	Medium	6
A3516M-5	3.5"	16"	2.25"	21"	2.25"	2.25"	Medium	6
A3516S	3.5"	16"	2"	21"	2"	2"	Straight	6
A3516S-5	3.5"	16"	2.25"	21"	2.25"	2.25"	Straight	6
A3518B	3.5"	18"	2.25"	18"			Blank	6
A3518F	3.5"	18"	2.25"	23"	2"	2"	Full	6
A3518F-5	3.5"	18"	2.25"	23"	2.25"	2.25"	Full	6
A3518M	3.5"	18"	2.25"	23"	2"	2"	Medium	6
A3518M-5	3.5"	18"	2.25"	23"	2.25"	2.25"	Medium	6
A3518S	3.5"	18"	2"	23"	2"	2"	Straight	6
A3518S-5	3.5"	18"	2.25"	23"	2.25"	2.25"	Straight	6
A3518S-8	3.5"	18"	2.25"	23"	2.5"	2.5"	Straight	6
A3520B	3.5"	20"	2.25"	20"			Blank	6
A3520S	3.5"	20"	2"	25"	2"	2"	Straight	6

(Continued)





### 35 Series (3.5" case - 2" & 2.25" core, aluminized)

Aluminized Part#	Case Diameter	Case Length	Core Diameter	Overall Length	Neck Inlet	Neck Outlet	Neck Configuration	Package Quantity
A3520S-5	3.5"	20"	2.25"	25"	2.25"	2.25"	Straight	6
A3522B	3.5"	22"	2.25"	22"			Blank	6
A3522F	3.5"	22"	2.25"	27"	2"	2"	Full	6
A3522M	3.5"	22"	2.25"	27"	2"	2"	Medium	6
A3522S	3.5"	22"	2"	27"	2"	2"	Straight	6
A3522S-5	3.5"	22"	2.25"	27"	2.25"	2.25"	Straight	6
A3524B	3.5"	24"	2.25"	24"			Blank	6
A3524M	3.5"	24"	2.25"	29"	2"	2"	Medium	6
A3524S	3.5"	24"	2"	29"	2"	2"	Straight	6
A3524S-5	3.5"	24"	2.25"	29"	2.25"	2.25"	Straight	6
A3524S-8	3.5"	24"	2.25"	29"	2.5"	2.5"	Straight	6
A3526B	3.5"	26"	2.25"	26"			Blank	6
A3526M	3.5"	26"	2.25"	31"	2"	2"	Medium	6
A3526S	3.5"	26"	2"	31"	2"	2"	Straight	6
A3530B	3.5"	30"	2.25"	30"			Blank	6
A3530S	3.5"	30"	2"	35"	2"	2"	Straight	6
A3530S-5	3.5"	30"	2.25"	35"	2.25"	2.25"	Straight	6
A3536B	3.5"	36"	2.25"	36"			Blank	6
A3536S	3.5"	36"	2"	41"	2"	2"	Straight	6
A3540B	3.5"	40"	2.25"	40"			Blank	6
A3540S	3.5"	40"	2"	45"	2"	2"	Straight	6

### 40 Series (4" case - 2.25" core, aluminized)

Aluminized Part #	Case Diameter	Case Length	Core Diameter	Overall Length	Neck Inlet	Neck Outlet	Neck Configuration	Package Quantity
A4012B	4"	12"	2.25"	12"			Blank	4
A4012S	4"	12"	2.25"	17"	2.25"	2.25"	Straight	4
A4015B	4"	15"	2.25"	15"			Blank	4
A4015S	4"	15"	2.25"	20"	2.25"	2.25"	Straight	4
A4018B	4"	18"	2.25"	18"			Blank	4
A4018F	4"	18"	2.25"	23"	2.25"	2.25"	Full	4
A4018M	4"	18"	2.25"	23"	2.25"	2.25"	Medium	4
A4018S	4"	18"	2.25"	23"	2.25"	2.25"	Straight	4
A4020B	4"	20"	2.25"	20"			Blank	4
A4020S	4"	20"	2.25"	25"	2.25"	2.25"	Straight	4

Nipple Size Ordering Chart	
All Nipples are "ID" Inside Diameter	
3	= 2" x 2"
4	= 2-1/4" x 2"
5	= 2-1/4" x 2-1/4"
6	= 2-1/2" x 2"
7	= 2-1/2" x 2-1/4"
8	= 2-1/2" x 2-1/2"
9	= 3" x 3"

Suffix Codes for Ordering Information	
B	= Blanks
S	= Straight Necks
MO	= Mild Offset Necks
FO	= Full Offset Necks



### 40 Series ( 4" case - 2.25" core, aluminized)

Aluminized Part #	Case Diameter	Case Length	Core Diameter	Overall Length	Neck Inlet	Neck Outlet	Neck Configuration	Package Quantity
A4022B	4"	22"	2.25"	22"			Blank	4
A4022S	4"	22"	2.25"	27"	2.25"	2.25"	Straight	4
A4024B	4"	24"	2.25"	24"			Blank	4
A4024S	4"	24"	2.25"	29"	2.25"	2.25"	Straight	4
A4026B	4"	26"	2.25"	26"			Blank	4
A4026S	4"	26"	2.25"	31"	2.25"	2.25"	Straight	4
A4030B	4"	30"	2.25"	30"			Blank	4
A4030S	4"	30"	2.25"	35"	2.25"	2.25"	Straight	4
A4036B	4"	36"	2.25"	36"			Blank	4
A4036S	4"	36"	2.25"	41"	2.25"	2.25"	Straight	4
A4040B	4"	40"	2.25"	40"			Blank	4
A4040S	4"	40"	2.25"	45"	2.25"	2.25"	Straight	4

### 45 Series (4" case - 2.5" core, aluminized)

Aluminized Part #	Case Diameter	Case Length	Core Diameter	Overall Length	Neck Inlet	Neck Outlet	Neck Configuration	Package Quantity
A4512B	4"	12"	2.5"	12"			Blank	4
A4512S	4"	12"	2.5"	17"	2.5"	2.5"	Straight	4
A4515B	4"	15"	2.5"	15"			Blank	4
A4515S	4"	15"	2.5"	20"	2.5"	2.5"	Straight	4
A4518B	4"	18"	2.5"	18"			Blank	4
A4518S	4"	18"	2.5"	23"	2.5"	2.5"	Straight	4
A4520B	4"	20"	2.5"	20"			Blank	4
A4520S	4"	20"	2.5"	25"	2.5"	2.5"	Straight	4
A4522B	4"	22"	2.5"	22"			Blank	4
A4522S	4"	22"	2.5"	27"	2.5"	2.5"	Straight	4
A4524B	4"	24"	2.5"	24"			Blank	4
A4524S	4"	24"	2.5"	29"	2.5"	2.5"	Straight	4
A4526B	4"	26"	2.5"	26"			Blank	4
A4526S	4"	26"	2.5"	31"	2.5"	2.5"	Straight	4
A4530B	4"	30"	2.5"	30"			Blank	4
A4530S	4"	30"	2.5"	35"	2.5"	2.5"	Straight	4
A4536B	4"	36"	2.5"	36"			Blank	4
A4536S	4"	36"	2.5"	41"	2.5"	2.5"	Straight	4
A4540B	4"	40"	2.5"	40"			Blank	4
A4540S	4"	40"	2.5"	45"	2.5"	2.5"	Straight	4

**Nipple Size Ordering Chart**  
All Nipples are "ID" Inside Diameter

- 3 = 2" x 2"
- 4 = 2-1/4" x 2"
- 5 = 2-1/4" x 2-1/4"
- 6 = 2-1/2" x 2"
- 7 = 2-1/2" x 2-1/4"
- 8 = 2-1/2" x 2-1/2"
- 9 = 3" x 3"

**Suffix Codes for Ordering Information**

- B = Blanks
- S = Straight Necks
- MO = Mild Offset Necks
- FO = Full Offset Necks



### 43 Series (4" case - 3" core, aluminized)

Aluminized Part #	Case Diameter	Case Length	Core Diameter	Overall Length	Neck Inlet	Neck Outlet	Neck Configuration	Package Quantity
A4312B	4"	12"	3"	12"			Blank	4
A4312S	4"	12"	3"	17"	3"	3"	Straight	4
A4315B	4"	15"	3"	15"			Blank	4
A4315S	4"	15"	3"	20"	3"	3"	Straight	4
A4318B	4"	18"	3"	18"			Blank	4
A4318S	4"	18"	3"	23"	3"	3"	Straight	4
A4322B	4"	22"	3"	22"			Blank	4
A4322S	4"	22"	3"	27"	3"	3"	Straight	4
A4322S-8	4"	22"	3"	27"	2.5"	2.5"	Straight	4
A4324B	4"	24"	3"	24"			Blank	4
A4324S	4"	24"	3"	29"	3"	3"	Straight	4
A4330B	4"	30"	3"	30"			Blank	4
A4330S	4"	30"	3"	35"	3"	3"	Straight	4

### 50 Series (5" case - 3" core, aluminized)

Aluminized Part #	Case Diameter	Case Length	Core Diameter	Overall Length	Neck Inlet	Neck Outlet	Neck Configuration	Package Quantity
A5018B	5"	18"	3"	18"			Blank	2
A5018B-350	5"	18"	3.5"*	18"			Blank	1
A5018B-400	5"	18"	4"*	18"			Blank	1
A5018S	5"	18"	3"	23"	3"	3"	Straight	2
A5022B	5"	22"	3"	22"			Blank	2
A5022S	5"	22"	3"	27"	3"	3"	Straight	2
A5024B	5"	24"	3"	24"			Blank	2
A5024B-350	5"	24"	3.5"*	24"			Blank	1
A5024B-400	5"	24"	4"*	24"			Blank	1
A5024S	5"	24"	3"	29"	3"	3"	Straight	2
A5026B	5"	26"	3"	26"			Blank	2
A5026S	5"	26"	3"	31"	3"	3"	Straight	2
A5030B	5"	30"	3"	30"			Blank	2
A5030S	5"	30"	3"	35"	3"	3"	Straight	2

\* Now Available in 3.5" & 4" Cores!



### 35 Series Specialty (header & twin)

Aluminized Part #	Case Diameter	Case Length	Core Diameter	Overall Length	Neck Inlet	Neck Outlet	Neck Configuration	Package Quantity
ADS200	3.5"	18"	2.5"	36"	2.5"	2"	Twin Combo	1
AH18	3.5"	18"	2.25"	25"	3", 3-Hole	2"	3-Hole Header	1
AH18A	3.5"	18"	2.25"	25"	3", 3-Hole	2.25"	3-Hole Header	1



Blank Torpedo Pack



Torpedo Pack w/Neck

### Torpedo Glasspacks (Dual Outlet)

Aluminized Part #	Case Diameter	Case Length	Core Diameter	Overall Length	Neck Inlet	Neck Outlet	Neck Configuration	Package Quantity
APP4315-9-5	4"	15"	3"	33"	3"	2.25"	Dual Outlet	1
APP4315-9-8	4"	15"	3"	33"	3"	2.5"	Dual Outlet	1
APP4315-B-5	4"	15"	3"	30"	Blank	2.25"	Dual Outlet	1
APP4315-B-8	4"	15"	3"	30"	Blank	2.5"	Dual Outlet	1
APP4318-9-5	4"	18"	3"	36"	3"	2.25"	Dual Outlet	1
APP4318-9-8	4"	18"	3"	36"	3"	2.5"	Dual Outlet	1
APP4318-B-5	4"	18"	3"	33"	Blank	2.25"	Dual Outlet	1
APP4318-B-8	4"	18"	3"	33"	Blank	2.5"	Dual Outlet	1
APP4515-234-5	4"	15"	2.5"	33"	2.75"	2.25"	Dual Outlet	1
APP4515-234-8	4"	15"	2.5"	33"	2.75"	2.5"	Dual Outlet	1
APP4515-5-5	4"	15"	2.5"	33"	2.25"	2.25"	Dual Outlet	1
APP4515-8-5	4"	15"	2.5"	33"	2.5"	2.25"	Dual Outlet	1
APP4515-8-8	4"	15"	2.5"	33"	2.5"	2.5"	Dual Outlet	1
APP4515-9-5	4"	15"	2.5"	33"	3"	2.25"	Dual Outlet	1
APP4515-B-5	4"	15"	2.5"	30"	Blank	2.25"	Dual Outlet	1
APP4515-B-8	4"	15"	2.5"	30"	Blank	2.5"	Dual Outlet	1
APP4518-8-5	4"	18"	2.5"	36"	2.5"	2.25"	Dual Outlet	1
APP4518-8-8	4"	18"	2.5"	36"	2.5"	2.5"	Dual Outlet	1

## Turbo Tube Mufflers & Welded Resonators

### AR SERIES - ALUMINIZED WELDED RESONATORS

See Page 15 for Nipple Size and Suffix Chart



Blank



Straight



With Downspout

### Aluminized Welded Resonators

Aluminized Part #	Case Diameter	Case Length	Core Diameter	Overall Length	Neck Inlet	Neck Outlet	Neck Configuration	Package Quantity
AR3012B	3"	12"	1.75"	12"			Blank	6
AR3012S	3"	12"	1.75"	17"	1.75"	1.75"	Straight	6
AR3012S-3	3"	12"	2"	17"	2"	2"	Straight	6
AR3012S-5	3"	12"	2.25"	17"	2.25"	2.25"	Straight	6
AR3014B	3"	14"	1.75"	14"			Blank	6
AR3014S	3"	14"	1.75"	19"	1.75"	1.75"	Straight	6
AR3514B	3.5"	14"	2.25"	14"			Blank	6
AR3514S	3.5"	14"	2"	19"	2"	2"	Straight	6
AR200	3.5"	16"	2"	30"	2"	2"	With Downspout	1
AR225	3.5"	16"	2.25"	30"	2.25"	2.25"	With Downspout	1
AR4011S-3	4"	11"	2"	16"	2"	2"	Straight	1
AR4016S	4"	16"	2.25"	23"	2.25"	2.25"	Straight	1
AR4016S-3	4"	16"	2"	23"	2"	2"	Straight	1



# Turbo Tube Mufflers & Welded Resonators

## Turbo Tube Mufflers



Aluminized  
Reversible Guaranteed  
Performance Not Affected

See Page 15 for Nipple  
Size and Suffix Chart



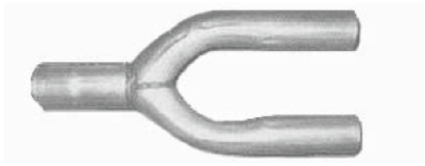
### 4" Twin Turbo Tube Mufflers

Aluminized Part #	Case Diameter	Case Length	Core Diameter	Overall Length	Neck Inlet	Neck Outlet	Neck Configuration	Package Quantity
ATT12B	4"	12"	1.75" (2)	12"				4
ATT12S-1	4"	12"	1.75" (2)	18"	1.75"	1.75"	Straight	4
ATT12S-3	4"	12"	1.75" (2)	18"	2"	2"	Straight	4
ATT12S-5	4"	12"	1.75"	18"	2.25"	2.25"	Straight	4
ATT15B	4"	15"	1.75"	15"			Blank	4
ATT15F-3	4"	15"	1.75"	21"	2"	2"	Full	4
ATT15F-5	4"	15"	1.75"	21"	2.25"	2.25"	Full	4
ATT15M-3	4"	15"	1.75"	21"	2"	2"	Medium	4
ATT15M-5	4"	15"	1.75"	21"	2.25"	2.25"	Medium	4
ATT15S-1	4"	15"	1.75"	21"	1.75"	1.75"	Straight	4
ATT15S-3	4"	15"	1.75"	21"	2"	2"	Straight	4
ATT15S-4	4"	15"	1.75"	21"	2.25"	2"	Straight	4
ATT15S-5	4"	15"	1.75"	21"	2.25"	2.25"	Straight	4
ATT15S-8	4"	15"	1.75"	21"	2.5"	2.5"	Straight	4
ATT18B	4"	18"	1.75"	18"			Blank	4
ATT18F-3	4"	18"	1.75"	24"	2"	2"	Full	4
ATT18M-3	4"	18"	1.75"	24"	2"	2"	Medium	4
ATT18M-5	4"	18"	1.75"	24"	2.25"	2.25"	Medium	4
ATT18S-1	4"	18"	1.75"	24"	1.75"	1.75"	Straight	4
ATT18S-3	4"	18"	1.75"	24"	2"	2"	Straight	4
ATT18S-3-5U	4"	18"	1.75"	31"	2"	2.25"	Dual Outlet	1
ATT18S-4	4"	18"	1.75"	24"	2.25"	2"	Straight	4
ATT18S-5	4"	18"	1.75"	24"	2.25"	2.25"	Straight	4
ATT18S-8	4"	18"	1.75"	24"	2.5"	2.5"	Straight	4
ATT22B	4"	22"	1.75"	22"			Blank	4
ATT22S-3	4"	22"	1.75"	28"	2"	2"	Straight	4
ATT22S-5	4"	22"	1.75"	28"	2.25"	2.25"	Straight	4
ATT24B	4"	24"	1.75"	24"			Blank	4
ATT24S-3	4"	24"	1.75"	30"	2"	2"	Straight	4
ATT24S-5	4"	24"	1.75"	30"	2.25"	2.25"	Straight	4
ATT24S-8	4"	24"	1.75"	30"	2.5"	2.5"	Straight	4

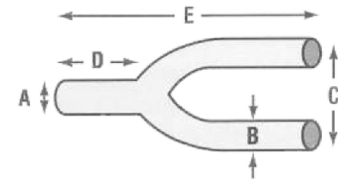
### 5" Twin Turbo Tube Mufflers

Aluminized Part #	Case Diameter	Case Length	Core Diameter	Overall Length	Neck Inlet	Neck Outlet	Neck Configuration	Package Quantity
ATT5018B	5"	18"	2.25"	18"	2.5"	2.5"	Blank	2
ATT5018S-8	5"	18"	2.25"	24"	2.5"	2.5"	Straight	2
ATT5018S-8-5U	5"	18"	2.25"	31"	2.5"	2.25"	Dual Outlet	1
ATT5018S-9	5"	18"	2.25"	24"	3"	3"	Straight	2
ATT5018S-9-5U	5"	18"	2.25"	31"	3"	2.25"	Dual Outlet	1
ATT5024B	5"	24"	2.25"	24"	2.5"	2.5"	Blank	2
ATT5024S-8	5"	24"	2.25"	30"	2.5"	2.5"	Straight	2
ATT5024S-9	5"	24"	2.25"	30"	3"	3"	Straight	2
ATT5024S-9-5U	5"	24"	2.25"	37"	3"	2.25"	Dual Outlet	1

## Universal "U" & "X" Pipes



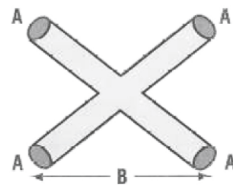
• Custom "U" pipes convert single outlet muffler for a quick & easy dual tailpipe installation!



### "U" Pipes - 16 gauge

Part #	A Single Inlet Diameter (ID)	B Dual Inlet Diameter (OD)	C Center Line	D Inlet Neck Length	E Overall Length
U1-1	1.75"	1.75"	6"	3.75"	14"
U2-1	2"	1.75"	6"	3.75"	14"
U2-2	2"	2"	6"	3.75"	14"
U3-2	2.25"	2"	4.25"	3.75"	14"
U3-3	2.25"	2.25"	4.375"	3.75"	14"
U4-2	2.5"	2"	4.25"	3.75"	14"
U4-3	2.5"	2.25"	4.25"	3.75"	14"
U4-4	2.5"	2.5"	4.5"	3.75"	14"
U6-2	3"	2"	6"	3.75"	14"
U6-3	3"	2.25"	4.5"	3.75"	14"
U6-4	3"	2.5"	5"	3.75"	14"
U6-6	3"	3"	6"	3.75"	16.75"

**Increased Power & Torque • Equalized Back Pressure Pulses • Maximum Scavenging of Spent Exhaust Gases  
Reduced Interior Resonance • Compact Design for Ease of Installation**



- Add an "X" pipe to dual exhausts to help equalize the pressure between both banks of the engine.
- With increase torque throughout the RPM range, eliminating back pressure, mellowing the tone both inside & outside the vehicle.

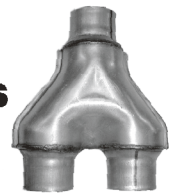
### "X" Pipes - 16 gauge

Part #	A Diameter ID	B Overall Length
XP2	2"	9.25"
XP3	2.25"	9.75"
XP4	2.5"	10"
XP6	3"	11"
XP7	3.5"	12.5"
XP8	4"	12.5"
XP4*	2.5"	70"
XP6*	3"	70"

\* Universal X-Pipe Installation Kits



### Stamped X-Pipes and Y-Pipes



### "X" Pipes

Part #	Dual Diameter (ID)	Center Line	Overall Length
SXP2SS	2"	4"	12"
SXP3	2.25"	4"	12"
SXP3SS	2.25"	4"	12"
SXP4	2.5"	4"	12"
SXP4SS	2.5"	4"	12"
SXP6	3"	4"	12"
SXP6SS	3"	4"	12"

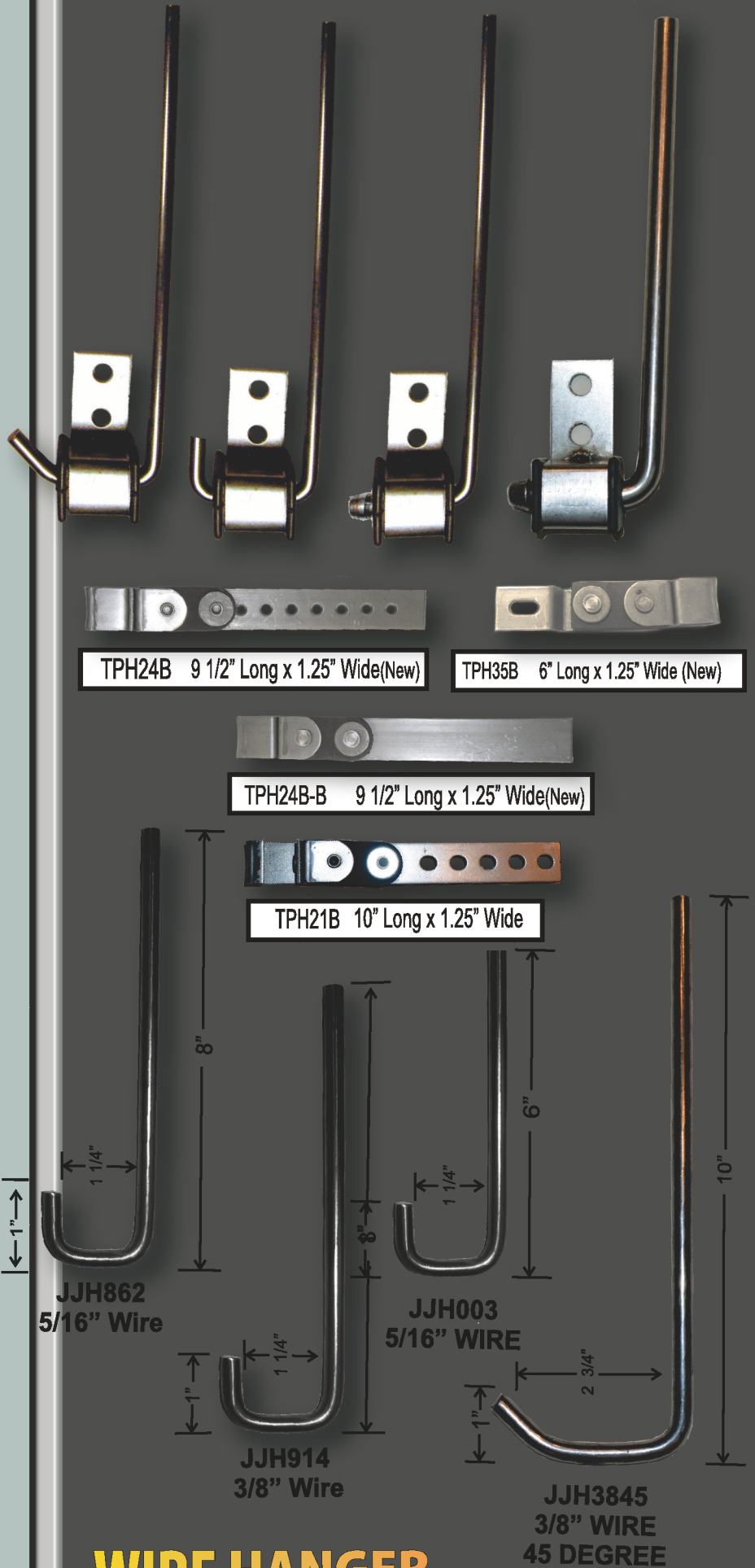
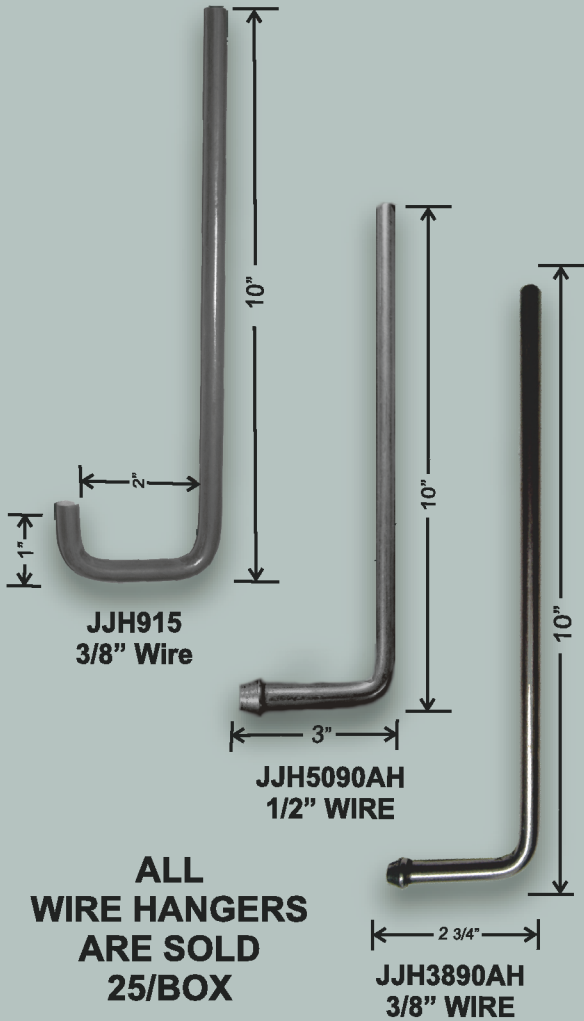
### "Y" Pipes

Part #	Dual Diameter (ID)	Center Line	Overall Length
SU2-2	2"	4"	10"
SU2-2SS	2"	4"	10"
SU3-3	2.25"	4"	10"
SU3-3SS	2.25"	4"	10"
SU4-3	2.5" X 2.25"	4"	10"
SU4-3SS	2.5" X 2.25"	4"	10"
SU4-4	2.5"	4"	10"
SU4-4SS	2.5"	4"	10"
SU6-3	3" X 2.25"	4"	10"
SU6-3SS	3" X 2.25"	4"	10"
SU6-4	3" X 2.5"	4"	10"
SU6-4SS	3" X 2.5"	4"	10"
SU6-6	3" X 3"	4"	10"
SU6-6SS	3" X 3"	4"	10"

# SWINGING HANGER

PART NUMBER	DIMENSION	BEND ANGLE
JSH3845	3/8" ROD	45 DEGREE BEND
JSH3890	3/8" ROD	90 DEGREE BEND
JSH51645	5/16" ROD	45 DEGREE BEND
JSH51690	5/16" ROD	90 DEGREE BEND
JSH3890AH	3/8" ROD	ARROW HEAD
JSH5090AH	1/2" ROD	ARROW HEAD

\* ALL SWINGING HANGERS ARE 10" LENGTH AND SOLD 50 PER BOX.



# WIRE HANGER

# JONES

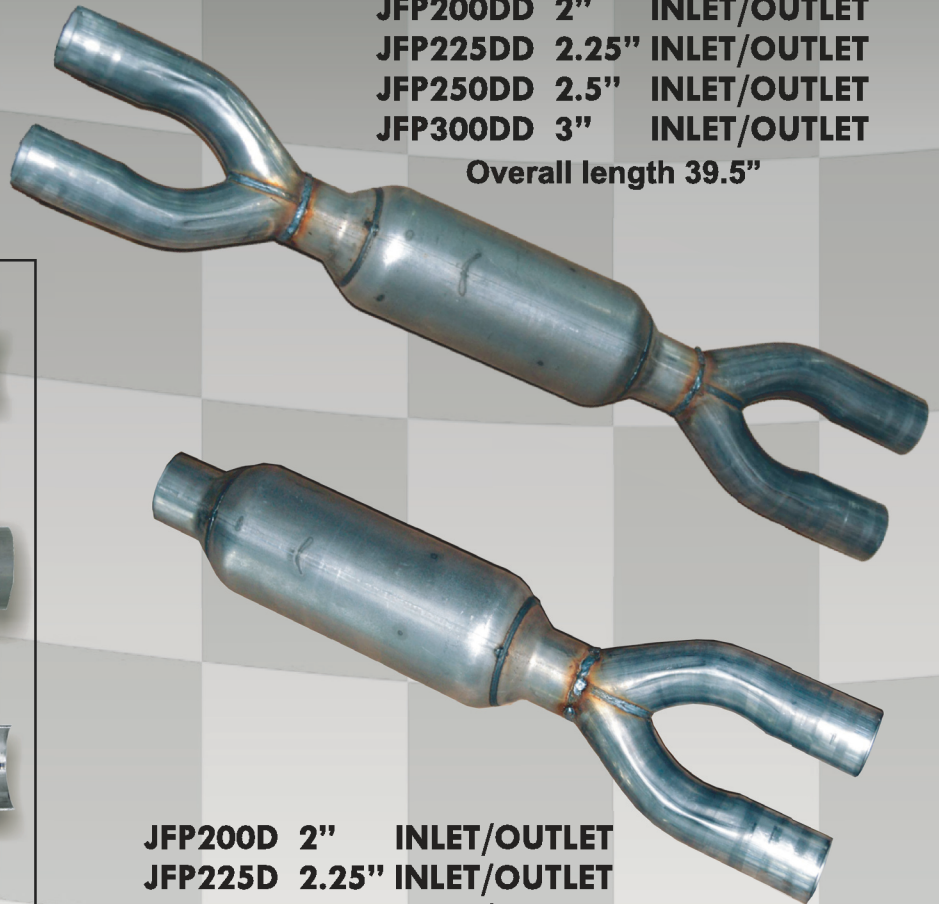


# Flowpacks

**INLET SIDE**

- JFP200DD 2" INLET/OUTLET
- JFP225DD 2.25" INLET/OUTLET
- JFP250DD 2.5" INLET/OUTLET
- JFP300DD 3" INLET/OUTLET

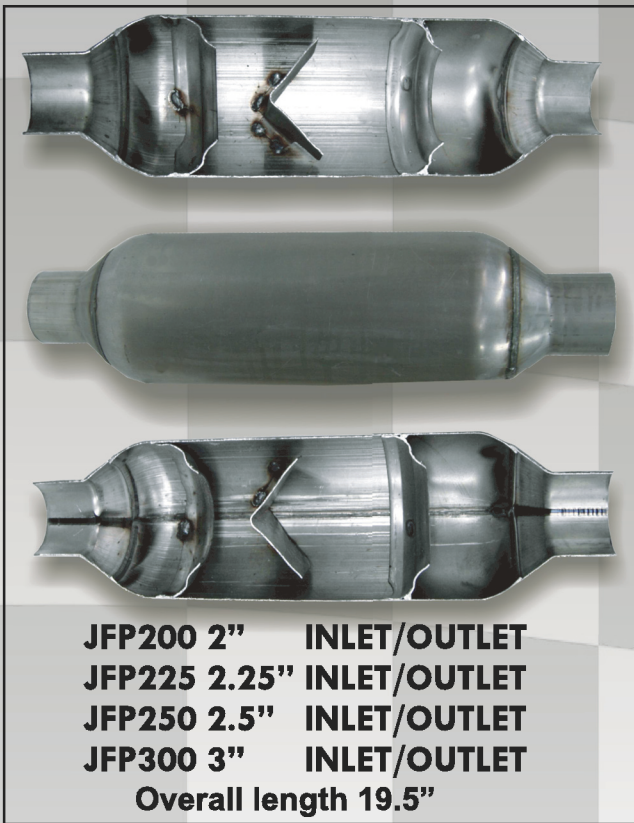
Overall length 39.5"



**OUTLET SIDE**

- JFP200D 2" INLET/OUTLET
- JFP225D 2.25" INLET/OUTLET
- JFP250D 2.5" INLET/OUTLET
- JFP300D 3" INLET/OUTLET

Overall length 28.75"



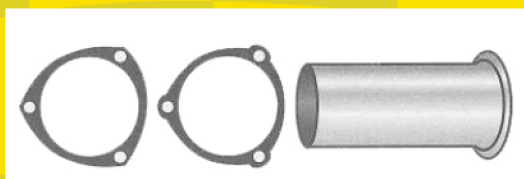
- JFP200 2" INLET/OUTLET
  - JFP225 2.25" INLET/OUTLET
  - JFP250 2.5" INLET/OUTLET
  - JFP300 3" INLET/OUTLET
- Overall length 19.5"

Jones Flowpacks are a 16 gauge aluminized steel, baffled muffler. They are 5" round, with a 13" shell length. They come in 4 inlet/outlet configurations. 2", 2.25", 2.5" and 3", single inlet/outlet; dual inlet/outlet; or double dual inlet/outlet. Like the Jones Full Boar mufflers, they are designed with the Flow Deflector Technology which allows for maximum flow and power gains. They produce a sound that is powerful and aggressive. Both durable and economical, they provide the sound your customers crave.





### HEADER BUDDY™ Is An Innovative, New Design For Header/Exhaust Assembly That Requires NO GASKET!



#### Header Collectors (6 piece set)

Part #	Set Includes	Inlet Size (ID)	# Per Box	Overall Length
AHC1	Outlet Collectors	3"	2	7"
	3-Hole Flanges	-	2	3"
	3-Hole Gaskets	-	2	3"

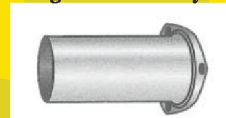
Header Buddy		
Part #	Inlet (OD)	Outlet (OD)
AHB1	3"	2.5"
AHB2	3"	2.25"
AHB3	3"	3"

- NO MORE time & money spent at exhaust centers!
- NO MORE crawling under your car to replace gaskets!
- NO MORE gasket repairs!

Header Buddy is made of 16 gauge aluminized tubing and has an inlet OD that fits 3" collector boxes, with an outlet of 2.5" OD. Flanges are 5/16 thick. Sold in pairs. Do not over-tighten when installing.

#### FAQ's About Header Buddy:

- Q.** Do I have to alter my headers? **No.**
- Q.** What does this product do for me? **Allows you to eliminate the collector gasket from the exhaust system.**
- Q.** What do I do with the old gaskets? **Landfill property. Remember, NO GASKETS.**
- Q.** Can I disconnect the headers from the exhaust system after this product is installed? **Yes. The Header Buddy is reusable.**
- As a matter of fact, many drag racers use this product because of the ease of disconnecting the exhaust system during races.**



#### Welded Aluminized Header Connectors

Part #	Inlet Size	Outlet Size (OD)	# Per Box	Overall Length
AWHC212	2.5"	2.5"	1	4"
AWHC300	3"	2.25"	1	4"
AWHC312	3.5"	2.5"	1	4"
AWHC312-300	3.5"	3"	1	4"

\* All Flanges are 3 hole.

# BearPaw™

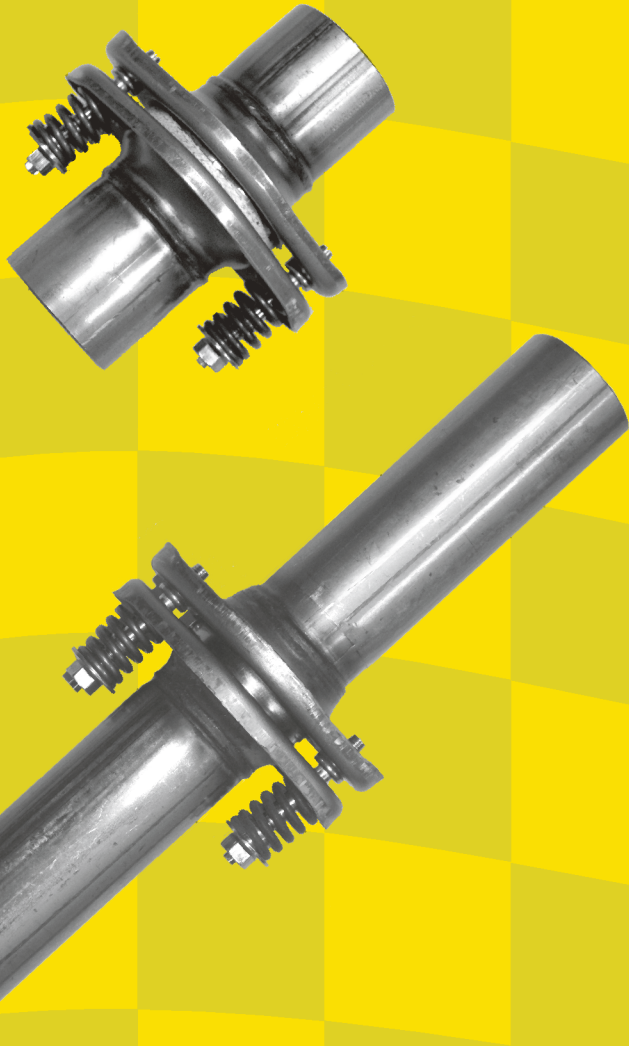
Clean with Confidence

BearPaw Hand Cleaner, it's tough enough to clean virtually everything that shop hands come in contact with, it's gentle enough to use daily without drying and cracking skin, and it won't clog the plumbing. BearPaw is a concentrated non-toxic detergent-based cleaner; you will be amazed how little is needed to do the Job! Many other cleaners use petroleum, which can leave your hands slimy and cause potential plumbing issues. We are offering four different sizes ranging from a pint to a one gallon pail, to suit everyone's needs.

Part #	Description	
JBP16	Pt. Container	6 per Box
JBP32	Qt. Container	6 per Box
JBP64	½ Gal. Container	6 per Box
JBP128	Gal. Container	4 per Box



# UNIVERSAL SPHERICAL JOINTS



- Replaces worn flex connections
- Reduces backpressure
- 409 Stainless Steel Tube
- Long-lasting performance
- Each size fits numerous applications

PART #	DIAMETER	OAL
SJ134	1 <sup>3</sup> / <sub>4</sub> " ID	6"
SJ200	2" ID	6"
SJ200-12	2" ID	12"
SJ225	2 <sup>1</sup> / <sub>4</sub> " ID	6"
SJ250	2 <sup>1</sup> / <sub>2</sub> " ID	6"
SJ300	3" ID	6"

(731) 632-1255 • Fax (731) 632-3058

[www.jonesexhaust.com](http://www.jonesexhaust.com)



# DIRECT FLEX



## GM1

98-00 Chevrolet S-10 2.2L  
98-00 GMC S-15 Sonoma 2.2L



## GM2

96-99 Pontiac Grand Am A/M DOHC 2.4L,  
96-99 Pontiac Sunfire 2.4L,  
97-98 Chevrolet Malibu 4 cyl 2.4L,  
98 Chevrolet Malibu 6-cyl 3.2L  
96-98 Buick Skylark A/M DOHC 2.4L  
96-98 Chevrolet Cavalier 2.4L  
96-98 Oldsmobile Achieva A/M DOHC 2.4L



## GM3

97-04 Chevrolet Monte Carlo 3.4L  
99-03 Chevrolet Malibu 3.1L  
97-00 Chevrolet Venture 3.4L  
00-04 Chevrolet Impala 3.4L,  
97-04 Buick Century 3.1L  
97-98 Buick Regal 3.1L,  
97-00 Oldsmobile Silhouette 3.4L  
97-04 Pontiac Grand Prix 3.1L  
97-00 Pontiac Montana/Transport 3.4L



## GM4

99-02 Chevrolet Cavalier 2.4L  
99 Malibu 2.4L,  
99-01 Oldsmobile Alero VIN T 2.4L  
02-04 Oldsmobile Alero VIN F 2.2L  
1999 Pontiac Grand Design #2 2.4L,  
99-01 Pontiac Grand Am SE VIN T 2.4L  
02-04 Pontiac Grand Am VIN F 2.2L,  
99-02 Pontiac Sunfire 2.2L



## GM5

96-97 Chevrolet S-10 2.2L  
96-97 GMC S-15 Sonoma 2.2L  
96-97 Isuzu Hombre 2.2L



## GM6

98-99 Chevrolet Monte Carlo 3.8L  
99-05 Chevrolet Cavalier Exc. Code 4 2.2L  
05-08 Chevrolet Cobalt 2.2L  
06-07 Chevrolet Cobalt 2.4L  
06-07 Chevrolet HHR 2.2L, 2.4L  
07 Pontiac G5 2.2L, 2.4L,  
05-07 Saturn Ion 1, 2, 3 2.2L  
05-07 Saturn Ion 3 2.4L



## GM7

97-01 Chevrolet Lumina 3.1L  
01 Chevrolet Impala 3.4L,  
97-99 Chevrolet Monte Carlo 3.0L  
1997 Oldsmobile Cutlass Supreme 3.1L



## FC1

95-00 Ford Contour V6 w/AT 2.5L,  
95-00 Mercury Mystique V6 w/AT 2.5L



## DS1

95-00 Dodge Stratus 2.0L, 2.4L, 2.5L  
98-00 Plymouth Breeze 2.0L  
97-00 Plymouth Neon 2.0L  
95-00 Chrysler Sebring 2.4L, 2.5L  
96-97 Chrysler Cirrus 2.4L  
95-98 Chrysler Cirrus LT 2.5L  
01-07 PT Cruiser Turbo 2.4L,

96-00 Dodge Caravan/Grand Caravan 2.4L  
96-01 Dodge Caravan/Grand Caravan 3.3L  
96-01 Dodge Caravan 3.8L,  
96-00 Dodge Grand Caravan 3.8L  
96-00 Plymouth Voyager/Grand Voyager 2.4L  
96-01 Plymouth Voyager 3.3L, 3.8L,  
96-00 Plymouth Grand Voyager 3.3L, 3.8L  
96-00 Chrysler Town & Country 3.3L, 3.8L

# DIRECT FLEX



## FT1

00-05 Ford Taurus DOHC VIN S 3.0L,  
00-07 Ford Taurus DOHC VIN U 3.0L,  
00-05 Mercury Sable DOHC VIN S 3.0L,  
00-07 Mercury Sable VIN U 3.0L



## GM8

98-99 Oldsmobile Intrigue K engine 3.8L,  
99-02 Oldsmobile Intrigue 3.5L,  
97-03 Pontiac Grand Prix 3.8L



## VW1

98-00 Volkswagen 2.0L



## VW2

06-08 Volkswagen Jetta



## GM9

Chevrolet Big Block-Left Side



## GM10

Chevrolet Big Block-Right Side



## GM11

02-05 Chevrolet Cobalt DOHC VIN F 2.2L,  
05-08 Chevrolet Cobalt DOHC VIN F 2.2L,  
05-08 Chevrolet Cobalt VIN B 2.4L,  
06-08 Chevrolet HHR DOHC 2.2L, 2.4L,  
06-08 Pontiac G5 DOHC 2.2L,  
07-08 Pontiac G5 DOHC 2.4L



## PG1

97-04 Buick Regal 3.8L,  
00-05 Chevrolet Impala K engine 3.8L,  
04-05 Chevrolet Impala Supercharged 3.8L,  
99 Chevrolet Lumina VIN K 3.8L,  
00-05 Chevrolet Monte Carlo K engine 3.8L,  
04-05 Chevrolet Monte Carlo Supercharged 3.8L,  
97-03 Pontiac Grand Prix 3.8L,  
99 Pontiac GTP Supercharged 3.8L,  
98-99 Oldsmobile Intrigue K engine 3.8L,  
99-02 Oldsmobile Intrigue 3.5L



## GM12

02 - 08 Chevrolet Cobalt Auto Tran 4 Cyl. 2.2L, 2.4L  
02 - 09 Chevrolet HHR 4 Cyl. 2.2L, 2.4L  
06 - 09 Saturn Ion 4Cyl. 2.4L  
05 - 07 Saturn Ion 1,2,3, - 4 Cyl. 2.2L



## DC1

1996 - 99 Chrysler  
Town & Country  
Dodge Caravan  
Plymouth Voyager 3.0L



## GM13

97-00 Chevy Venture Van 3.4L  
99-00 Pontiac Montana 3.4L Angled

# DIRECT FLEX PIPES



\*Gasket Included



## J2028

1999-2002 Volkswagen Jetta 2.8L 6 cyl.  
1999-2005 Volkswagen Golf GTI 2.8L 6 cyl.



## J2079

2002-2005 Buick Rendezvous 3.4L (FWD only)  
2006-2007 Buick Rendezvous 3.5L (FWD only)  
2002-2005 Chevrolet Venture 3.4L  
2002-2004 Oldsmobile Silhouette 3.4L  
2001-2005 Pontiac Aztek 3.4L  
2002-2005 Pontiac Montana 3.4L



## J2071

1999-2004 Volkswagen Beetle 1.8L 4 cyl. (except Turbos)  
2000-2001 Volkswagen Golf 1.8L 4 cyl.  
2000-2005 Volkswagen Jetta 1.8L 4 cyl.  
2000-2006 Volkswagen Golf GTI 1.8 L 4 cyl.

## J2080

2002-2006 Mazda MPV 3.0L 6 cyl.



## J2086

1999 Buick Riviera 3.8L  
2000-2005 Buick Lesabre 3.8L  
1999-2005 Buick Park Avenue 3.8L  
(excluding Supercharged)  
2000-2005 Pontiac Bonneville 3.8L

## J2089

2001-2005 Volkswagen Beetle 2.0L  
2002-2006 Volkswagen Golf 2.0L  
2002-2005 Volkswagen Jetta 2.0L



## Flex Tubes

Flex Tube "Blanks" (For Weld Only)				Flex Tube with Neck			
Part #	Description (ID)	Body Length	Overall Length	Part #	Description (ID)	Body Length	Overall Length
FLX1344B	1.75"	4"	4"	FLX1344N	1.75"	4"	8"
FLX1346B	1.75"	6"	6"	FLX1346N	1.75"	6"	10"
FLX1348B	1.75"	8"	8"	FLX1348N	1.75"	8"	12"
FLX13410B	1.75"	10"	10"	FLX13410N	1.75"	10"	14"
FLX2004B	2"	4"	4"	FLX2004N	2"	4"	8"
FLX2006B	2"	6"	6"	FLX2006N	2"	6"	10"
FLX2008B	2"	8"	8"	FLX2008N	2"	8"	12"
FLX2010B	2"	10"	10"	FLX2010N	2"	10"	14"
FLX21408B	2.25"	8"	8"	FLX21408N	2.25"	8"	12"
FLX21410B	2.25"	10"	10"	FLX21410N	2.25"	10"	14"
FLX2144B	2.25"	4"	4"	FLX2144N	2.25"	4"	8"
FLX2146B	2.25"	6"	6"	FLX2146N	2.25"	6"	10"
FLX2508B	2.5"	8"	8"	FLX2508N	2.5"	8"	12"
FLX2510B	2.5"	10"	10"	FLX2510N	2.5"	10"	14"
FLX2506B	2.5"	6"	6"	FLX2506N	2.5"	6"	10"
FLX2504B	2.5"	4"	4"	FLX2504N	2.5"	4"	8"
FLX3004B	3"	4"	4"	FLX3004N	3"	4"	10"
FLX3006B	3"	6"	6"	FLX3006N	3"	6"	12"
FLX3008B	3"	8"	8"	FLX3008N	3"	8"	12"
FLX3010B	3"	10"	10"	FLX3010N	3"	10"	14"
FLX3012B	3"	12"	12"	FLX3012N	3"	12"	16"
FLX3014B	3"	14"	14"	FLX3014N	3"	14"	18"
FLX3508B	3.5"	8"	8"	FLX3508N	3.5"	8"	12"
FLX4008B	4"	8"	8"	FLX4008N	4"	8"	12"
FLX4010B	4"	10"	10"	FLX4010N	4"	10"	14"

### Expandable Aluminized Necks 2-Ply 16 Gauge, Stainless Steel Wire Braid



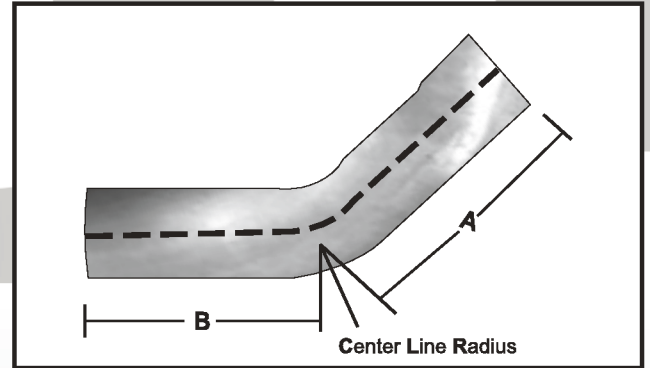
- No leak, automated welding of necks
- Stainless 2-ply bellows construction for maximum lateral compression
- Internal Braid for increased life
- Hydroforming process ensures leak free bellows

Interlocking Flex			
Part #	Description (ID)	Body Length	Overall Length
FLX1344BI	1.75"	4"	4"
FLX1346BI	1.75"	6"	6"
FLX1348BI	1.75"	8"	8"
FLX13410BI	1.75"	10"	10"
FLX2004BI	2"	4"	4"
FLX2006BI	2"	6"	6"
FLX2008BI	2"	8"	8"
FLX2010BI	2"	10"	10"
FLX21408BI	2.25"	8"	8"
FLX21410BI	2.25"	10"	10"
FLX2144BI	2.25"	4"	4"
FLX2146BI	2.25"	6"	6"
FLX2508BI	2.5"	8"	8"
FLX2506BI	2.5"	6"	6"
FLX2504BI	2.5"	4"	4"
FLX3004BI	3"	4"	4"
FLX3006BI	3"	6"	6"
FLX3008BI	3"	8"	8"
FLX3010BI	3"	10"	10"
FLX3012BI	3"	12"	12"
FLX3014BI	3"	14"	14"
FLX3508BI	3.5"	8"	8"
FLX4008BI	4"	8"	8"
FLX4010BI	4"	10"	10"

# UNIVERSAL ELBOWS



## 45 and 90 Degree Elbows



Jones Part No.	Degree Bend	Diameter	Length A	Length B	CLR
JE10313	45	3"	7"	7"	6"
JE10314	45	3 1/2"	8"	8"	7"
JE10736	45	4"	5"	5"	4"
JE10315	45	4"	9 1/4"	9 1/4"	8"
JE10729	45	5"	7"	7"	8"
JE10672	90	2 1/2"	6 3/8"	6 3/8"	4 1/2"
JE10675	90	3"	8"	8 1/4"	6"
JE10757	90	3"	10"	12"	5"
JE10681	90	4"	8"	8"	4.5
JE10678	90	4"	10"	10"	8"
JE10764	90	5"	8 1/2"	8 1/2"	6"
JE10557	90	5"	11"	11"	5 1/2"
JE10320	45	2 1/4"	6"	6"	4"
JE10312	45	2 1/2"	6 3/8"	6 3/8"	4 1/2"
JE10673	90	2 1/4"	6"	6"	4 1/2"



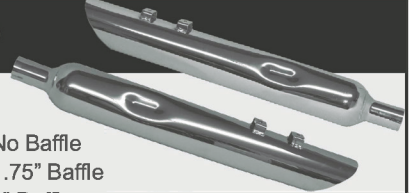
\*All Ends are ID / OD



# Slip-On Mufflers For Harley Davidson®, SofTail®, Touring® Dyna Glide® & Sportster® Motorcycles



## 4" Slip On Mufflers For Harley Davidson®



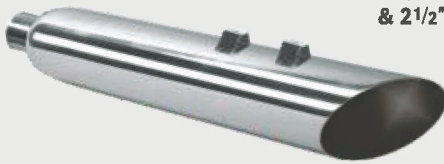
JAC430MC	4" x 30" Angle Cut No Baffle
JAC430MC134	4" x 30" Angle Cut 1.75" Baffle
JAC430MC200	4" x 30" Angle Cut 2" Baffle
JAC430MC250	4" x 30" Angle Cut 2.5" Baffle
JAC430MCRV	4" x 30" Reverse Angle Cut No Baffle
JAC430MCRV134	4" x 30" Reverse Angle Cut 1.75" Baffle
JAC430MCRV200	4" x 30" Reverse Angle Cut 2" Baffle
JAC430MCRV250	4" x 30" Reverse Angle Cut 2.5" Baffle
JPT430MC	4" x 30" Straight Cut No Baffle
JPT430MC134	4" x 30" Straight Cut 1.75" Baffle
JPT430MC200	4" x 30" Straight Cut 2" Baffle
JPT430MC250	4" x 30" Straight Cut 2.5" Baffle
JAC430MC-8	4" x 30" Angle Cut No Baffle (For Milwaukee 8's)
JAC430MC134-8	4" x 30" Angle Cut 1.75" Baffle (For Milwaukee 8's)
JAC430MC200-8	4" x 30" Angle Cut 2" Baffle (For Milwaukee 8's)
JAC430MC250-8	4" x 30" Angle Cut 2.5" Baffle (For Milwaukee 8's)

### Angle Cut Fits All Touring Models 1995 - 2016

#### Touring® Model

JAC31230MC Slash Up,  
JAC31230MCRV Down, Out  
JAC31230MC-134  
JAC31230MCRV-134  
JAC31230MC-200  
JAC31230MCRV-200  
JAC31230MC-250  
JAC31230MCRV-250

**BAFFLE SIZES:**  
1 3/4", 2"  
& 2 1/2"



\*Baffles sold in pairs for Touring Models

#### Angle Cut Fits All Milwaukee 8's

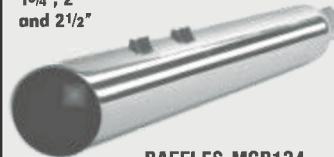
JAC31230MC-8      JAC31230MC-134-8  
JAC31230MC-200-8      JAC31230MC-250-8

### Straight Cut Touring® Model

Fits All Touring Models 1995 - 2016

JPT31228MC      JPT31228MC-200  
JPT31230MC      JPT31230MC-200  
JPT31228MC-134      JPT31228MC-250  
JPT31230MC\_134      JPT31230MC-250

**BAFFLE SIZES:**  
1 3/4", 2"  
and 2 1/2"



**BAFFLES-MCB134,  
MCB200, MCB250**

### Angle Cut

#### Sportster® Model

Fits Sportster Models 2004 - 2016

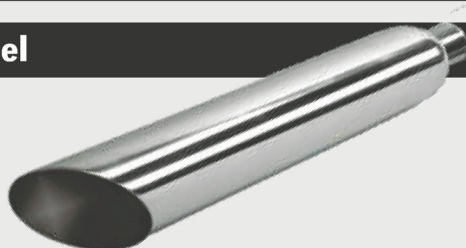


JAC322MCSP Sportster Series 04'-08'

**2" BAFFLES**

### Softail® Model

- Heritage-FLSTC
- Custom-FXSTC
- Night Train-FXSTB
- SoftailStandard-FXST
- Rocker C-FXCWC
- Rocker-FXCW



**JAC322MC**

\*2" SoftTail® Baffle Included

Fits Softail Models 2007 & 2016

### Dyna-Glide® Model



\*2" Dyna-Glide® Baffle  
Included

Fits 1995-2016 Models:  
Super Glide-FXD  
35th Anniversary-FXD135  
Wide Glide-FXDWG  
Street Bob-FXDB  
SuperGlide-FXD  
Screamin' Eagle-FXDSE  
Dyna Lowrider-FXDL

**JAC320MCDG**

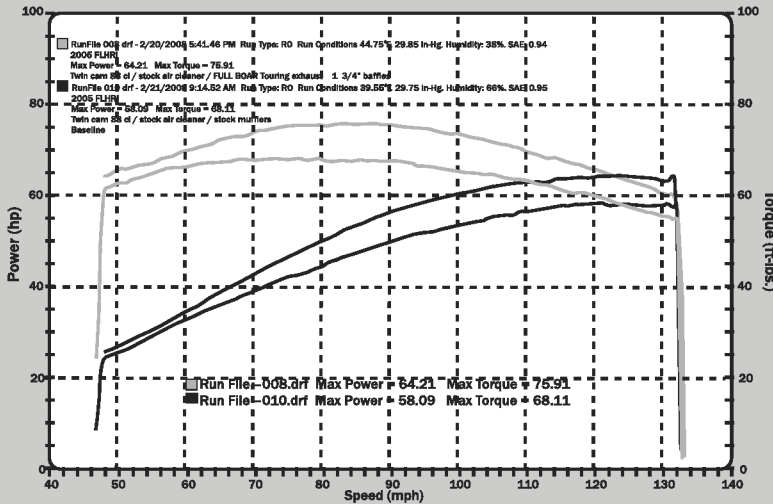


# Tests Prove Horsepower Boost and Performance

DYNOJET RESEARCH

CF: SAE Smoothing: 5

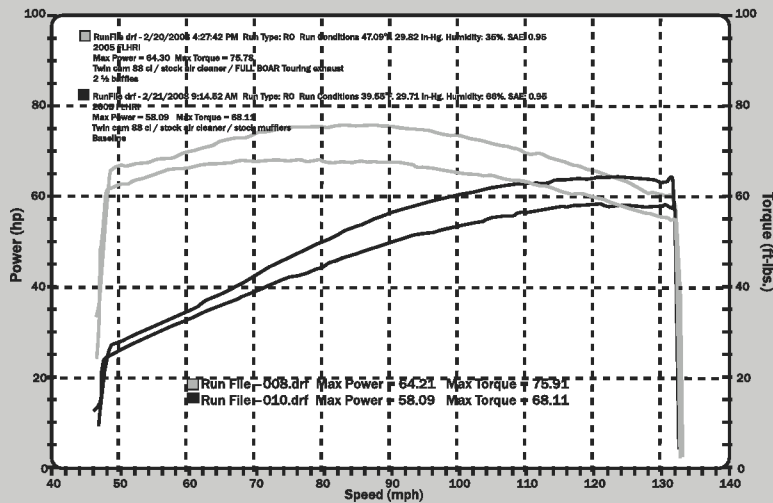
## Jones Full Boar Performance



DYNOJET RESEARCH

CF: SAE Smoothing: 5

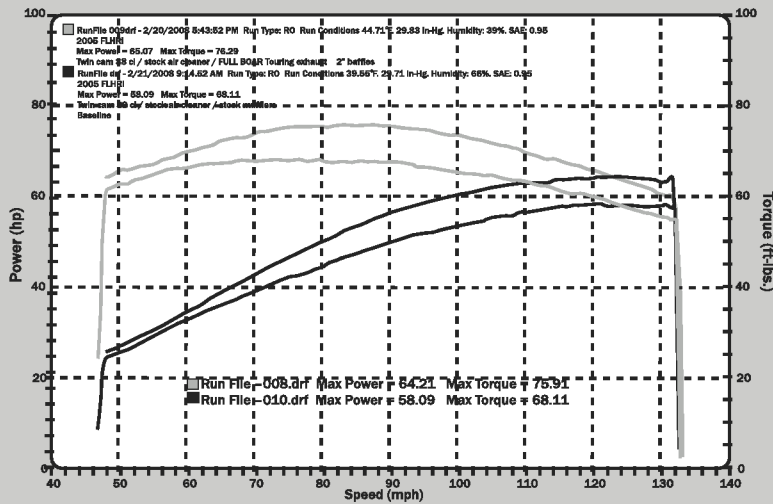
## Jones Full Boar Performance



DYNOJET RESEARCH

CF: SAE Smoothing: 5

## Jones Full Boar Performance



Full Boar mufflers have been engineered through thousands of hours of development and "real world" application in the performance division of Jones Exhaust Systems. We believe our motorcycle exhaust offers the best combination of performance, quality, sound and price in the market today. Our performance exhaust experience goes back 40 years to 1986. Our baffles are wrapped in high temperature fiberglass matting to disperse heat and retain sound. Our state-of-the-art hexavalent chrome plating process allows us to offer a two-year limited warranty against manufacturer defects. If you are looking for increased power and great sound at a great price, then Full Boar motorcycle mufflers are for you.

Based on the 2005 H-D Roadking dyno testing, there is a great boost in power. Full Boar Mufflers will make your bike sound the way a Harley® Should—deep and throaty. You will feel the "seat of the pants performance" as soon as you crank and ride the motorcycle

### DYNO RESULTS FROM 2005 HARLEY DAVIDSON® ROADKING®:

Starting with Stock pipes, we ran the bike through the Dyno.  
 Baseline with stock mufflers – no other modifications.  
 58.09 Max Power - 68.11 Max Torque

Full Boar Mufflers with 1 3/4" baffles with no other modifications.  
 64.21 Max Power = Gain of 6.12 Max Power  
 75.91 Max Torque = Gain of 7.80 Max Torque

Full Boar Mufflers with 2.00" baffles with no other modifications.  
 65.07 Max Power = Gain of 6.98 Max Power  
 76.29 Max Torque = Gain of 8.11 Max Torque

Full Boar Mufflers with 2.50" baffles with no other modifications.  
 Power = Gains of 6.21 Max Power  
 75.78 Max Torque = Gain of 7.67 Max Torque

*The mufflers and components offered may not meet EPA emission and noise guidelines and may be restricted to off-road only. Blueing may be caused by tuning characteristics, over-heating, cam timing, carburetor jetting, etc. and is not a manufacturing defect. The name Harley-Davidson®, and all models of motorcycles associated with the Harley-Davidson® name are trademarks of Harley Davidson®, and are utilized within this flyer and/or catalog.*





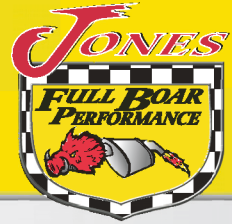
# LUBRICANTS

www.jonesexhaust.com



PART #	CONTAINER SIZE	PER CASE	DESCRIPTION
JBC14	15 OZ. AEROSOL	6	CAM2 BRAKE PARTS CLEANER NON-CHLORINATED
5W20B	1 QT	12	CAM2 SUPER PRO MAX SEMI-SYNTHETIC 5W-20
5W20S	32 OZ	6	CAM2 SYNAVEX FULL SYNTHETIC SAE 5W-20 LSPI
0W20S	32 OZ	6	CAM2 DEXOS1: GEN2 FULL SYNTHETIC SAE 0W-20 MOTOR OIL
5W30S	32 OZ	6	CAM2 DEXOS1: GEN2 FULL SYNTHETIC SAE 5W-30 MOTOR OIL
5W30B	1 QT	12	CAM2 SUPER PRO MAX SEMI-SYNTHETIC 5W-30
10W30B	1 QT	12	CAM2 SUPER PRO MAX SEMI-SYNTHETIC 10W-30 SN/GF-5 MOTOR OIL
10W40B	1 QT	12	CAM2 SUPER PRO MAX SEMI-SYNTHETIC 10W-40 SN/GF-5 MOTOR OIL
15W40SR	1 GAL	3	SHELL ROTELLA T4 TRIPLE PROTECTION 15W40 HEAVY DUTY DIESEL OIL
DEXATF	1 QT	12	CAM2 MULTI-PURPOSE DEXRON III / MERCON AUTOMATIC TRANS. FLUID
DEXVIATF	1 QT	12	CAM2 DEXRON VI MULT-VEHICLE FULL SYN AUTOMATIC TRANS. FLUID
MERATF	1 QT	12	CAM2 MERCON V ATF
ATF+4	1 QT	12	CAM2 ATF 4 CHRYSLER
MBCAF	1 GAL	6	PRIME DEXCOOL CONCENTRATE
MBLAF	1 GAL	6	MAJOR BRAND RED 50/50
MBGAF	1 GAL	6	MAJOR BRAND GREEN CONCENTRATE
MBGOAF	1 GAL	6	PRIME FULL STRENGTH GOLD CONCENTRATE-UNIVERSAL
DEF	2.5 GAL	2	MUSKET DIESEL EXHAUST FLUID
PBB	16 OZ AEROSOL	12	PB BLASTER PENETRATING OIL
0W20S-BIB	6 GAL	1	CAM2 DEXOS FULL SYN 0W20 BAG IN BOX
10W30B-BIB	6 GAL	1	CAM2 SUP PROMAX 10W30 BAG IN BOX
5W20B-BIB	6 GAL	1	CAM2 SUP PROMAX 5W20B BAG IN BOX
5W20S-BIB	6 GAL	1	CAM2 FULL SYN SYNAVEX5W20 BAG IN BOX
5W30B-BIB	6 GAL	1	CAM 2 SUP PROMAX 5W30 BAG IN BOX
5W30S-BIB	6 GAL	1	CAM2 DEXOS FULL SYN 5W30 BAG IN BOX

# Jones Universal Exhaust Flanges



(All Flanges are sold 10 Per Box)

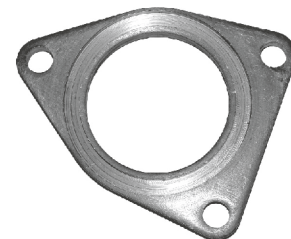
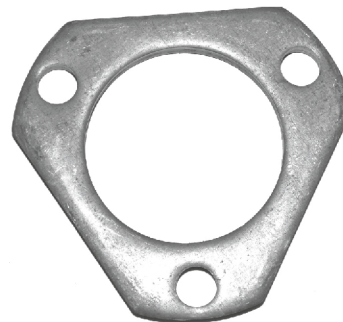
Part Number	Port Hole Size	Bolt Hole Center	Bolt Hole Size	Width
J15002	2-1/8"	2-11/16"	7/16"	3-25/32"



Part Number	Port Hole Size	Bolt Hole Center	Bolt Hole Size	Width	Thickness
J15023	2-1/16"	3"	1/2"	2-11/16"	7/16"
J15322	2"	3-1/2"	1/2 x 3/4"	4-3/4"	5/16"
*J15487	2"	3-1/2"	1/2 x 3/4"	4-3/4"	5/16"
*J15488	2-1/8"	3-1/2"	1/2 x 3/4"	4-3/4"	5/16"
J15492	2-1/4"	3-15/16"	7/8 x 1/2"	5-1/4"	1/4"
J15496	2-1/2"	3-15/16"	9/16 x 15/16"	5-1/4"	5/16"
*J15500	2-1/2"	3-15/16"	1/2 x 29/32"	5-1/4"	5/16"
J15512	1-3/4"	3-7/16"	1/2 x 3/4"	4-3/4"	5/16"
JSF188	2-9/16"	3-7/8"	17/32 x 29/32"	5-1/4"	3/8"
JSF199	3"	4-1/8"	7/16"	5-1/8"	3/8"



Part Number	Port Hole Size	Bolt Hole Center	Bolt Hole Size	Width	Thickness
J15057	2-5/8"	3"	7/16"	3-7/8"	3/8"
J15058	2-1/4"	2-11/16"	7/16"	3-1/2"	3/8"
J15126	2-1/4"	2-11/16"	7/16"	3-11/16"	5/16"
J15326	2"	2-11/16"	21/32 x 17/32"	3-11/16"	5/16"
J15327	2-1/2"	2-13/16"	7/16"	3-11/16"	5/16"
J15328	2-1/2"	3"	7/16"	3-7/8"	5/16"
J15334	3"	3-7/16"	3/8"	4-3/8"	5/16"
J15340	2"	2-3/4"	5/8 x 1/2"	3-11/16"	5/16"
*J15501	2-5/8"	3"	7/16"	3-7/8"	5/16"
JSF133	2"	2-11/16"	1/2 x 5/8"	3-11/16"	3/8"

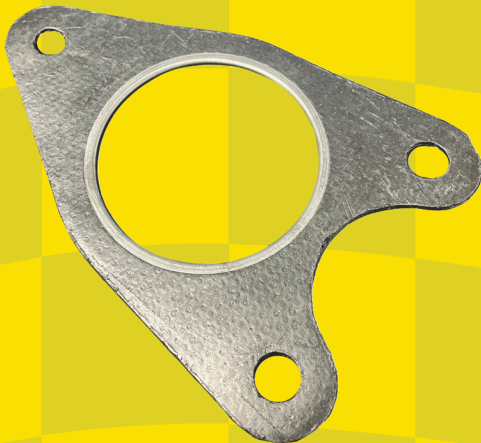
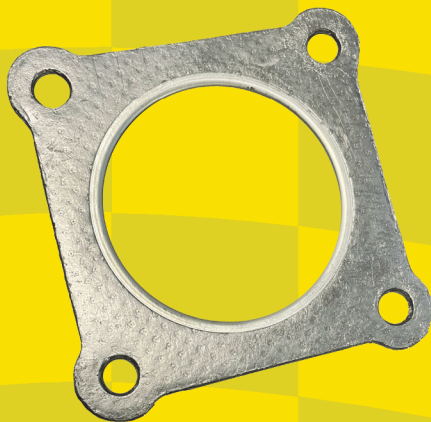


Part Number	Port Hole Size	Bolt Hole Center	Bolt Hole Size	Width	Thickness
J15050	2-1/2"	3-7/8 & 3"	15/32"	4-23/32"	3/8"

\* Flanges with Chamfer



# UNIVERSAL GASKETS



Part #	# Bolt Holes	Nickson	Port Hole	Bolt Hole Center	Bolt Hole Size	Width
JEG24021	2	13021	2-3/32"	3-3/8"	9/16"x11/16"	3"
JEG24095	2		2-1/2"	4"	13/32" (one open)	3-3/8"
JEG24096	2		2-5/16"	3-1/2"	3/8" (one open)	3-1/4"
JEG24187	2	13187	2-19/32"	3-29/32"	1/2"x3/4"	3-1/2"
JEG24204	2	13204	2-1/4"	4"	7/16"	3-1/32"
JEG24229	3	13229	2-5/16"	3-1/8"	13/32"	4-1/8"
JEG24280	4	13280	2-19/32"	3-1/8"	3/8"	4-1/8"
JEG24283	4	13283	2"	4-1/4" & 3-25/32" (irregular)	3/8"	5-1/8"
JEG24293	4	13293	2-1/2"	5" & 4-1/2" (irregular)	3/8"	4-1/2"
JEG24334	2	13334	2-27/32"	5-1/8"	3/8"	6-1/4"
JEG24367	3	13367	3-9/32"	4-7/16"	7/16"	5-1/2"
JEG24422	4	13422	3-9/16"	3-1/4"	7/16"	4-7/16"
JEG24685	2	13685	2-1/2"	3-29/32"	7/16"	3-3/8"
JEG24864	6	13864	(2) 2-3/32"	2-1/2"	7/16"	6"
JEG24308	3	13308	2-3/4"	5-1/8" & 3" (irregular)	7/16"	4-1/4"

Part #	Nickson	Port Hole	Width
JEG24017		2-1/32"	2-1/2"
JEG24057		2-1/2"	3"
JEG24255	13255	2-13/32"	3-5/32"
JEG24332	13332	2-13/16"	3-1/8"
JEG24338	13338	2-31/32"	3-1/2"
JEG24615	13615	2"	2-11/16"
JEG24323	13323	2-13/16"	3-7/32"
JEG24329	13329	2-15/16"	3-9/32"
JEG24841		2-1/16"	2-13/32"

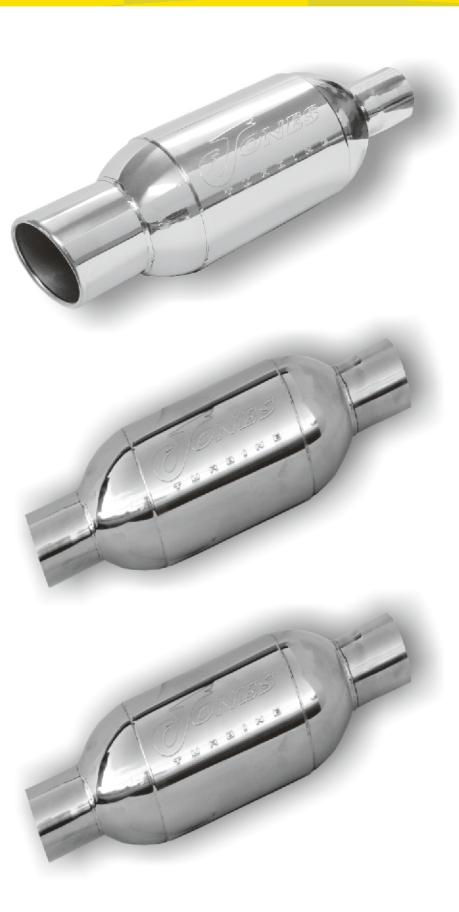
**SOLD INDIVIDUALLY PACKAGED**



# JONES TURBINE

Designed to increase performance, in street racing or trucks, the Turbine Muffler combines amazing versatility and economy to give you the best all around performance muffler on the market today, with a throaty sound.

Throaty



**JT2540I**  
2.5" C/C, 4" C (Rolled Tip),  
6" Round,  
19" Overall Length.

**JT3535**  
3.5" C/C, 6" Round,  
19" Overall Length

**JT2525**  
2.5" C/C, 6" Round,  
19" Overall Length

**JT4040**  
4" C/C, 6" Round,  
19" Overall Length

**JT3030**  
3" C/C, 6" Round,  
19" Overall Length

**JT5050**  
5" C/C, 7" Round,  
19" Overall Length

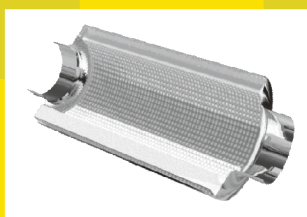


## Jones Exhaust Resonators



**JR20**  
2" C/C,  
4" Round, 9.5" Body  
14" Overall Length

**JR24**  
2.25" C/C,  
4" Round, 9.5" Body  
14" Overall Length



**JR25**  
2.5" C/C,  
4" Round, 9.5" Body  
14" Overall Length

**JR30**  
3" C/C,  
6" Round, 9.5" Body  
14" Overall Length

All Jones Exhaust resonators feature a straight-through perforated inner tube wrapped with 3000° ceramic sound absorbent material.

# TURBINE XL

Mid-Range



The ultimate muffler for cars, trucks, SUV and Diesel, giving a more mid-range tone. Some models incorporate a resonator, resulting in decreased EGT's and increased performance and fuel mileage.



### JT2525XL

Resonated 2.5" C/C, 6" Round, 24.5" Overall Length



### JT3030XL

Resonated 3" C/C, 6" Round, 24.5" Overall Length



### JT3535XL

Resonated 3.5" C/C, 6" Round, 24.5" Overall Length



### JT4040XL

Resonated 4" C/C, 6" Round, 24.5" Overall Length



### JT5050XL

Resonated 5" C/C, 7" Round, 29" Overall Length

[www.youtube.com/jonesexhaust](http://www.youtube.com/jonesexhaust)  
[www.facebook.com/jonesexhaustsystems](http://www.facebook.com/jonesexhaustsystems)



At Jones Exhaust, we carry performance mufflers, accessories, hardware, and related parts...and now, welding wire.

# DOWN to the WIRE



We now offer ER70S-6 wire in the following 6 spool sizes:

- .023" 11 LB. #WW02311
- .030" 11 LB. #WW03011
- .030" 33 LB. #WW03033
- .035" 11 LB. #WW03511
- .035" 33 LB. #WW03533
- .035" 44 LB. #WW03544

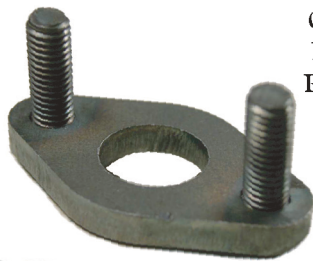
## Cut Off Wheels

Jones part no: 14COW  
Wheels are sold in packages of 5 each.



## O2 BUNGS

02 Oxygen Sensor  
Flange for Toyota  
Part Number: J811



M18 x 1.25 Metric Thread  
Part Number: J63-45



M12 x 1.25 Metric Thread  
Part Number: J69



M18 x 1.5 Metric Thread  
Part Number: J63-50



Universal Bung Plug  
Part Number: U02BP



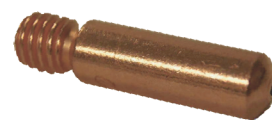
M18 x 1.5 Thread Mill Steel  
Part Number: J02  
25 per box





## Specialty Welding Tips & Nozzles

Part No.	Description	Qty.
P11-35	CONTACT TIP ECU 0.9MM/.035" For Tweco Gun	25
M000-066	CONTACT TIP 0.023MM For Miller Gun	25
B1527-08	CONTACT TIP 0.8MM M6 ECU For Binzel Gun	25
M000-067	CONTACT TIP 0.030MM For Miller Gun	25
P11-23	CONTACT TIP 0.6MM ECU For Tweco Gun	25
M000-068	CONTACT TIP 0.035MM For Miller Gun	25
P11-30	CONTACT TIP ECU 0.8MM/.030" For Tweco Gun	25
B1527-06	CONTACT TIP M6 .024" For Binzel Gun	25
P21-50	NOZZLE SELF INSULATED For Tweco Gun	5
M169-715	NOZZLE 1/2, FLUSH TIP For Miller Gun	5
B1530	CONICAL NOZZLE For Binzel Gun	5
M169-725	NOZZLE 5/8, RECESS 1/8 For Miller Gun	5







# Specialty Performance Exhaust Products

Stainless Steel Tubing

**JONES EXHAUST OFFERS A LINE OF STAINLESS STEEL TUBING, PRODUCED DOMESTICALLY. IT'S AVAILABLE IN BOTH 409 NON-POLISHED AND 304 HIGH-POLISHED IN 14 GAUGE.**



PART NUMBER	DESCRIPTION
	<b>7.5' NON-POLISHED</b>
114175SSNP	1.75"
114200SSNP	2"
114225SSNP	2 1/4"
114250SSNP	2 1/2"
114300SSNP	3"
	<b>10' NON-POLISHED</b>
114175SSNP-10'	1.75"
114200SSNP-10'	2"
114225SSNP-10'	2 1/4"
114250SSNP-10'	2 1/2"
114300SSNP-10'	3"
	<b>10' HIGH-POLISHED</b>
114200SSHP	2"
114225SSHP	2 1/4"
114250SSHP	2 1/2"
114300SSHP	3"

**409, NON-POLISHED - 10' STICKS IN 2", 2 1/4", 2 1/2" AND 3"  
304, HIGH POLISHED - 10' STICKS IN 2", 2 1/4", 2 1/2", AND 3"**



PART #	PAGE #
0W20S	40
0W20S-BIB	40
10W30B	40
10W30B-BIB	40
10W40B	40
114175SSNP	47
114175SSNP-10'	47
114200SSHP	47
114200SSNP	47
114200SSNP-10'	47
114225SSHP	47
114225SSNP	47
114225SSNP-10'	47
114250SSHP	47
114250SSNP	47
114250SSNP-10'	47
114300SSHP	47
114300SSNP	47
114300SSNP-10'	47
14COW	45
15W40SR	40
5W20B	40
5W20B-BIB	40
5W20S	40
5W20S-BIB	40
5W30B	40
5W30B-BIB	40
5W30S	40
5W30S-BIB	40
A3009B	22
A3009S	22
A3012B	22
A3012S	22
A3012S-3	22
A3015B	22
A3015S	22
A3018B	22
A3018S	22
A3022B	22
A3022S	22
A3026B	22
A3026S	22
A3509B	22
A3509S	22
A3509S-5	22
A3512B	22
A3512M	22
A3512S	22
A3512S-5	22
A3514B	22
A3514S	22
A3516B	22
A3516M	22
A3516M-5	22
A3516S	22
A3516S-5	22
A3518B	22
A3518F	22
A3518F-5	22
A3518M	22

PART #	PAGE #
A3518M-5	22
A3518S	22
A3518S-5	22
A3518S-8	22
A3520B	22
A3520S	22
A3520S-5	23
A3522B	23
A3522F	23
A3522M	23
A3522S	23
A3522S-5	23
A3524B	23
A3524M	23
A3524S	23
A3524S-5	23
A3524S-8	23
A3526B	23
A3526M	23
A3526S	23
A3530B	23
A3530S	23
A3530S-5	23
A3536B	23
A3536S	23
A3540B	23
A3540S	23
A4012B	23
A4012S	23
A4015B	23
A4015S	23
A4018B	23
A4018F	23
A4018M	23
A4018S	23
A4020B	23
A4020S	23
A4022B	24
A4022S	24
A4024B	24
A4024S	24
A4026B	24
A4026S	24
A4030B	24
A4030S	24
A4036B	24
A4036S	24
A4040B	24
A4040S	24
A4312B	25
A4312S	25
A4315B	25
A4315S	25
A4318B	25
A4318S	25
A4322B	25
A4322S	25
A4322S-8	25
A4324B	25
A4324S	25

PART #	PAGE #
A4330B	25
A4330S	25
A4512B	24
A4512S	24
A4515B	24
A4515S	24
A4518B	24
A4518S	24
A4520B	24
A4520S	24
A4522B	24
A4522S	24
A4524B	24
A4524S	24
A4526B	24
A4526S	24
A4530B	24
A4530S	24
A4536B	24
A4536S	24
A4540B	24
A4540S	24
A5018B	25
A5018B-350	25
A5018B-400	25
A5018S	25
A5022B	25
A5022S	25
A5024B	25
A5024B-350	25
A5024B-400	25
A5024S	25
A5026B	25
A5026S	25
A5030B	25
A5030S	25
ADS200	25
AH18	25
AH18A	25
AHB1	31
AHB2	31
AHB3	31
AHC1	31
AP5012S-4	18
AP5018S-4	18
APP4315-9-5	26
APP4315-9-8	26
APP4315-B-5	26
APP4315-B-8	26
APP4318-9-5	26
APP4318-9-8	26
APP4318-B-5	26
APP4318-B-8	26
APP45 18-8-8	26
APP4515-234-5	26
APP4515-234-8	26
APP4515-5-5	26
APP4515-8-5	26
APP4515-8-8	26
APP4515-9-5	26

PART #	PAGE #
APP4515-B-5	26
APP4515-B-8	26
APP4518-8-5	26
AR200	26
AR225	26
AR3012B	26
AR3012S	26
AR3012S-3	26
AR3012S-5	26
AR3014B	26
AR3014S	26
AR3514B	26
AR3514S	26
AR4011S-3	26
AR4016S	26
AR4016S-3	26
ATF+4	40
ATT12B	27
ATT12S-1	27
ATT12S-3	27
ATT12S-5	27
ATT15B	27
ATT15F-3	27
ATT15F-5	27
ATT15M-3	27
ATT15M-5	27
ATT15S-1	27
ATT15S-3	27
ATT15S-4	27
ATT15S-5	27
ATT15S-8	27
ATT18B	27
ATT18F-3	27
ATT18M-3	27
ATT18M-5	27
ATT18S-1	27
ATT18S-3	27
ATT18S-3-5U	27
ATT18S-4	27
ATT18S-5	27
ATT18S-8	27
ATT22B	27
ATT22S-3	27
ATT22S-5	27
ATT24B	27
ATT24S-3	27
ATT24S-5	27
ATT24S-8	27
ATT5018B	27
ATT5018S-8	27
ATT5018S-8-5U	27
ATT5018S-9	27
ATT5018S-9-5U	27
ATT5024B	27
ATT5024S-8	27
ATT5024S-9	27
ATT5024S-9-5U	27
AWHC212	31
AWHC300	31
AWHC312	31



<b>PART #</b>	<b>PAGE #</b>
B1527-06	46
B1527-08	46
B1530	46
CT20	3
CT20	3
DEF	40
DEXATF	40
DEXVIATF	40
DS1	33
F523A	18
F523E	18
F524A	18
F524B	18
F524C	18
F524E	18
F525A	18
F525B	18
F5263G	18
F5264F	18
F526A	18
F526B	18
F526C	18
F533F	18
F534E	18
F535A	18
F535B	18
F5362C	18
F5363C	18
F5364C	18
F536A	18
F536B	18
F536C	18
F624-8D	18
F626-4D	18
F626-6D	18
F626-7D	18
F626-8D	18
F726-6D	18
F726-7D	18
F726-8D	18
F824-8D	18
F824-9D	18
F830-6D	18
F830-7D	18
F830-8D	18
FB2041	17
FB2441	17
FB2042	17
FB2440	17
FB2442	17
FB2443	17
FB2540	17
FB2541	17
FB2542	17
FB2583	17
FB3043	17
FB2S43	17
FB3041	17
FB3051	17
FB3052	17

<b>PART #</b>	<b>PAGE #</b>
FB425	17
FB426	17
FB427	17
FB428	17
FB429	17
FB430	17
FB4553	17
FB4554	17
FC1	33
FLX13410BI	36
FLX1344B	36
FLX1344BI	36
FLX1344N	36
FLX1346BI	36
FLX1348BI	36
FLX2004B	36
FLX2004BI	36
FLX2004N	36
FLX2006B	36
FLX2006BI	36
FLX2006N	36
FLX2008B	36
FLX2008BI	36
FLX2008N	36
FLX2010B	36
FLX2010BI	36
FLX2010N	36
FLX21408B	36
FLX21408BI	36
FLX21408N	36
FLX21410B	36
FLX21410BI	36
FLX21410N	36
FLX2144B	36
FLX2144BI	36
FLX2144N	36
FLX2146B	36
FLX2146BI	36
FLX2146N	36
FLX2504B	36
FLX2504BI	36
FLX2504N	36
FLX2506B	36
FLX2506BI	36
FLX2506N	36
FLX2508B	36
FLX2508BI	36
FLX2508N	36
FLX2510B	36
FLX2510N	36
FLX3004B	36
FLX3004BI	36
FLX3004N	36
FLX3006B	36
FLX3006BI	36
FLX3006N	36
FLX3008B	36
FLX3008BI	36
FLX3008N	36
FLX3010B	36

<b>PART #</b>	<b>PAGE #</b>
FLX3010BI	36
FLX3010N	36
FLX3012B	36
FLX3012BI	36
FLX3012N	36
FLX3014B	36
FLX3014BI	36
FLX3014N	36
FLX3508B	36
FLX3508BI	36
FLX3508N	36
FLX4008B	36
FLX4008BI	36
FLX4008N	36
FLX4010B	36
FLX4010BI	36
FLX4010N	36
FLX13410B	36
FLX13410N	36
FLX1346B	36
FLX1346N	36
FLX1348B	36
FLX1348N	36
FT1	34
GM1	33
GM10	34
GM11	34
GM2	33
GM3	33
GM4	33
GM5	33
GM6	33
GM7	33
GM8	34
GM9	34
IRAC31212	2
IRAC31212-3	2
IRAC31212-BV	6
IRAC31212-SV	6
IRAC31216	2
IRAC31218	2
IRAC31218-BV	6
IRAC31218-MP	6
IRAC31222	2
IRAC316	2
IRAC324	2
IRAC412	2
IRAC412-BV	6
IRAC418	2
IRAC422	2
IRAC512	2
IRAC518	2
IRAC524	2
IRAC7018	2
IRAC7018-5	2
IRAC8018	2
IRAC8018-5	2
IRPT134	1
IRPT200	1
IRPT212	1

<b>PART #</b>	<b>PAGE #</b>
IRPT214	1
IRPT3006	1
IRPT3012	1
IRPT3506	1
IRPT3512	1
IRPT3512-3	1
IRPT3518	1
IRPT4006	1
IRPT4012	1
IRPT4012-312	1
IRPT4016-312	1
IRPT4018	1
IRPT5012	1
IRPT5012-4	1
IRPT5018	1
J02	45
J15002	41
J15023	41
J15050	41
J15057	41
J15058	41
J15126	41
J15322	41
J15326	41
J15327	41
J15328	41
J15334	41
J15340	41
J15487	41
J15488	41
J15492	41
J15496	41
J15500	41
J15501	41
J15512	41
J2028	35
J2071	35
J2079	35
J2080	35
J2086	35
J2089	35
J243016RAC2	14
J243512PT	12
J243518AC15	7
J243518AC2	7
J243518PT	12
J243518RAC2	14
J243522PT	12
J243522RAC2	14
J244012AC	7
J244012RAC	14
J244018AC	7
J244018AC2	7
J244018RAC2	14
J253512RAC	13
J253518PT	12
J254022AC	7
J254022AC15	7
J303512RAC	13
J303512RACK	14



PART #	PAGE #
J304012AC	7
J304012RACK	14
J304018AC	7
J304022AC	7
J3409TD	10
J401015RACB	14
J401018RACB	14
J405012PT	10
J405014RACB	14
J405015TD	8
J405015TDBK	10
J405018RAC	13
J406015RAC	13
J406015RACBK	14
J406018RAC	13
J407015AC	7
J407015ACB	7
J407015RAC	13
J407015RACB	14
J407015RACBK	14
J407018ACB	7
J407018RACB	14
J407018RACBK	14
J408015ACB	7
J408015RACB	14
J408015RACBK	14
J408018ACB	7
J408018RACB	14
J408018RACBK	14
J408018RSL	15
J4509TD	10
J4515AC	8
J4515RAC	14
J4616AC	8
J4616RAC	14
J4616RACK	14
J4712RAC	14
J4712RACK	14
J4718AC	7
J4718ACK	8
J4718RAC	14
J4718RACK	14
J4722AC	8
J4722RAC	14
J501015RACB	14
J501018RACB	14
J505016TD	15
J506012RAC	13
J506014RAC	13
J506015RAC	13
J506015RACBK	14
J506015RACK	14
J506015RBK	15
J506018RAC	13
J507015AC	7
J507015RAC	13
J507015RACB	14
J507015RACBK	14
J507018RACB	14
J508015AC	7

PART #	PAGE #
J508015ACB	7
J508015RACB	14
J508015RACBK	14
J508018RACB	14
J5612TD	10
J5615AC	8
J5615RAC	14
J5809RAC	14
J5809RACK	14
J5812RAC	14
J5812RACK	14
J5818AC	8
J5818RAC	14
J5818RACK	14
J5822AC	8
J63-45	45
J63-50	45
J6715TD	10
J6815RAB	13
J69	45
J7815RAB	13
J8015AC	7
J8015ACB	7
J8015RAB	13
J8018ACB	7
J811	45
J8912AC	7
J8912ACB	7
J8912PT	10
J8915AC	7
J8915RAB	13
J9012AC	7
J9015AC	7
J9015ACB	7
J9015RAB	13
JAC112	3
JAC134	3
JAC200	3
JAC212	3
JAC21218	3
JAC214	3
JAC312	3
JAC312-214	3
JAC31212	3
JAC31212-BV	6
JAC31212-SV	6
JAC31216	3
JAC31216-3	3
JAC31218	3
JAC31218-BV	6
JAC31218-C	6
JAC31218-MP	6
JAC31218-SV	6
JAC31222	3
JAC31222-212	3
JAC31222-3	3
JAC31230MC	38
JAC31230MC-134	38
JAC31230MC-200	38
JAC31230MC-200-8	38

PART #	PAGE #
JAC31230MC-250	38
JAC31230MC-250-8	38
JAC31230MCRV	38
JAC31230MCRV-134	38
JAC31230MCRV-200	38
JAC31230MCRV-250	38
JAC316	3
JAC316-214	3
JAC316-3	3
JAC316-BV	6
JAC316-MP	6
JAC316-SV	6
JAC320MCDG	38
JAC322	3
JAC322-3	3
JAC322MC	38
JAC322MCSP	38
JAC324	3
JAC324-214	3
JAC412	3
JAC412-312	3
JAC412-4	3
JAC412-BV	6
JAC416-312	3
JAC418	3
JAC418-3	3
JAC418-4	3
JAC418-MP	6
JAC418-SV	6
JAC422	3
JAC422-3	3
JAC424	3
JAC430MC	38
JAC430MC-8	38
JAC430MC134	38
JAC430MC134-8	38
JAC430MC200	38
JAC430MC200-8	38
JAC430MC250	38
JAC430MC250-8	38
JAC430MCRV	38
JAC430MCRV134	38
JAC430MCRV200	38
JAC430MCRV250	38
JAC512-4	3
JAC518	3
JAC518-4	3
JAC524	3
JAC618-212	3
JAC618-4	3
JAT013B12	11
JBC14	40
JBP128	31
JBP16	31
JBP32	31
JBP64	31
JBT200	1
JCB212-SS	4
JCB214-SS	4
JCB234-SS	4

PART #	PAGE #
JCB300-SS	4
JCM212	1
JCM312	1
JCM31222	1
JCM316	1
JCM405099	15
JCM506099	15
JCT410	1
JDA214	2
JDA312-200	2
JDP200	2
JDR200	1
JDR212	1
JDR214	1
JDT013B	15
JDT013C	15
JDT214	2
JDT24013BDL	15
JDT24013C12	15
JDT24017AC	15
JDT24017ACBK	15
JDT24017BF	15
JDT24096L	15
JDT24113C	15
JDT24113CBK	15
JDT24156LBF	15
JDT24156LBK	15
JDT24156RBF	15
JDT24156RBK	15
JDT24158BF	15
JDT24161BF	15
JDT25083	15
JDT25083L	15
JDT25083R	15
JDT25101	15
JE10312	37
JE10313	37
JE10314	37
JE10315	37
JE10320	37
JE10557	37
JE10672	37
JE10673	37
JE10675	37
JE10678	37
JE10681	37
JE10729	37
JE10736	37
JE10757	37
JE10764	37
JEG24017	42
JEG24021	42
JEG24057	42
JEG24095	42
JEG24096	42
JEG24187	42
JEG24204	42
JEG24229	42
JEG24255	42
JEG24280	42



PART #	PAGE #
JEG24283	42
JEG24293	42
JEG24308	42
JEG24323	42
JEG24329	42
JEG24332	42
JEG24334	42
JEG24338	42
JEG24367	42
JEG24422	42
JEG24615	42
JEG24685	42
JEG24841	42
JEG24864	42
JFC112	1
JFC134	1
JFC200	1
JFP200	30
JFP200D	30
JFP200DD	30
JFP225	30
JFP225D	30
JFP225DD	30
JFP250	30
JFP250D	30
JFP250DD	30
JFP300	30
JFP300D	30
JFP300DD	30
JGT200	3
JJH003	29
JJH3845	29
JJH3890AH	29
JJH5090AH	29
JJH862	29
JJH914	29
JJH915	29
JPT112	3
JPT134	3
JPT200	3
JPT212	3
JPT214	3
JPT312	3
JPT312-3	3
JPT31212	3
JPT31212-3	3
JPT31218	3
JPT31220	3
JPT31220-3	3
JPT31228MC	38
JPT31228MC-134	38
JPT31228MC-200	38
JPT31228MC-250	38
JPT31230MC	38
JPT31230MC 134	38
JPT31230MC-200	38
JPT31230MC-250	38
JPT316	3
JPT320-3	3
JPT324	3

PART #	PAGE #
JPT412-4	3
JPT416	3
JPT418-4	3
JPT430MC	38
JPT430MC134	38
JPT430MC200	38
JPT430MC250	38
JR20	43
JR24	43
JR25	43
JR30	43
JSF133	41
JSF188	41
JSF199	41
JSH3845	29
JSH3890	29
JSH3890AH	29
JSH5090AH	29
JSH51645	29
JSH51690	29
JST006	11
JST007A	12
JST009	11
JST013A	11
JST013A12	11
JST013A16	11
JST013B12	11
JST013B16	11
JST014	7
JST026S	9
JST027D	8
JST027D2	9
JST027DK	9
JST027E	8
JST027E2	8
JST027EK	9
JST027G	8
JST027H	8
JST027R	8
JST039B	11
JST040	11
JST041	12
JST042	12
JST043S2	12
JST048	9
JST051	10
JST053	12
JST062	12
JST070	12
JST075	11
JST0792	9
JST080	9
JST081	12
JST081K	12
JST084	9
JST090	13
JST091	13
JST092	12
JST093	12
JST116	11

PART #	PAGE #
JST118	13
JST119	13
JST120L	10
JST120R	10
JST121	10
JST123	9
JST130	9
JST132	10
JST133	11
JST136A	11
JST136B	11
JST136C	11
JST139	10
JST140	10
JST200	1
JST25013B16	11
JST25013C16	11
JST30013C12	11
JST30013C12K	11
JST30013C16	11
JST40013D12	11
JST538NS	10
JT2525	43
JT2525XL	44
JT25401	43
JT3030	43
JT3030XL	44
JT3535	43
JT3535XL	44
JT4040	43
JT4040XL	44
JT5050	43
JT5050XL	44
JTD112	2
JTD134	2
JTD200	2
JTD212	2
JTD214	2
JTS300	2
JTT200L	2
JUB 903	20
JUB 904	20
JUB 905	20
JUB 906	20
JUB 911	20
JUB 912	20
JUB 913	20
JWS200	1
JWT200	1
JWT212	1
JWT214	1
JXS0416	16
JXS0419	16
JXS0425	16
JXS0426	16
JXS0445	16
JXS2772	16
M000-066	46
M000-067	46
M000-068	46

PART #	PAGE #
M169-715	46
M169-725	46
MBCAF	40
MBGAF	40
MBGOAF	40
MBLAF	40
MCB134	38
MCB200	38
MCB250	38
MERATF	40
MF1224	16
MF1225	16
MF1226	16
MF1229	16
MF1234	16
MF1235	16
MF1236	16
MF1255	16
MF1256	16
MF1259	16
MF1265	16
MF1266	16
MF2149	16
MF2158	16
MF2198	16
MF2251	16
MF2255	16
MF2256	16
MF2259	16
MF2265	16
MF2267	16
MF2268	16
MF2278	16
MF2288	16
MF2289	16
MF2298	16
MF2468	16
MF2568	16
MF2579	16
MF2588	16
MF2589	16
MF2590	16
MH150	21
P11-23	46
P11-30	46
P11-35	46
P21-50	46
PAC200SS	5
PAC212SS	5
PAC214SS	5
PAC31212SS	5
PAC31216SS	5
PAC31218-212SS	5
PAC31218SS	5
PAC31222-214SS	5
PAC31222SS	5
PAC312SS	5
PAC316SS	5
PAC318-212SS	5
PAC318SS	5



PART #	PAGE #
PAC324SS	5
PAC412SS	5
PAC418SS	5
PAC422-214SS	5
PACN31218-212SS	8
PBB	40
PBRAC5012-4BF	15
PBRAC5012-4SS	5
PBRAC5012-5SS	5
PBRAC5018-5SS	5
PBRAC5022-5SS	5
PBRAC6012-4SS	5
PBRAC6012-5BF	15
PBRAC6012-5SS	5
PBRAC6018-4SS	5
PCAM214SS	4
PCAM214SS	8
PCAM234SS	4
PCAM234SS	8
PCAMS214SS	9
PCAMS214SS-6	9
PDTU312SS	4
PDW 3008SS	4
PDW 4008SS	4
PDW3002SS	4
PDW41210SS	4
PMS625LSS	4
PMS625RSS	4
POR512SS	4
PPT200SS	4
PPT212SS	4
PPT214SS	4
PRAC31212SS	5
PRAC31216SS	5
PRAC31218-212SS	5
PRAC31218SS	5
PRAC31222SS	5
PRAC316SS	5
PRAC418SS	5
PRAC422SS	5
PRACN31218-212SS	14
PRACN5012-4BF	15
PRACN6012-5BF	15
PRESPT5012-4SS	4
PRPT3507SS	4
PRS600SS	4
PRTU500SS	4
PSDW4128SS	4
PTD300SS	5
PTD312SS	5
PTD400SS	5
Q411A	20
Q411B	20
Q412A	20
Q412B	20
Q413A	20
Q413B	20
Q413C	20
Q4142C	20
Q4143C	20

PART #	PAGE #
Q414A	20
Q414B	20
Q414C	20
Q414E	20
Q4163C	20
Q416A	20
Q416B	20
Q523E	20
Q524A	20
Q524B	20
Q524C	20
Q524E	20
Q5263C	20
Q5264F	20
Q526A	20
Q526B	20
Q526C	20
Q532F	20
Q533F	20
Q5353C	20
Q5362C	20
Q5363C	20
Q5364C	20
Q5365A	20
Q536A	20
Q536B	20
Q536C	20
SD412-3D	21
SD614-2D	21
SD614-3D	21
SD626-23B	21
SD626-24B	21
SD626-2B	21
SD626-2D	21
SD626-34B	21
SD626-3B	21
SD626-3D	21
SD626-4B	21
SD626-4D	21
SD626-7D	21
SD626-8D	21
SD718-3B	21
SD718-6B	21
SD722-8D	21
SD724-8D	21
SD726-32P	21
SD726-34B	21
SD726-3B	21
SD726-3F	21
SD726-4B	21
SD726-4D	21
SD726-4F	21
SD726-4P	21
SD726-64C	21
SD726-64P	21
SD726-6B	21
SD726-6D	21
SD726-7D	21
SD726-8D	21
SD730-35B	21

PART #	PAGE #
SD824-4B	21
SD824-78D	21
SD826-68B	21
SD830-54G	21
SD830-54K	21
SD830-64G	21
SD830-6B	21
SD830-7D	21
SD830-8D	21
SJ134	32
SJ200	32
SJ200-12	32
SJ225	32
SJ250	32
SJ300	32
SU2-2	28
SU2-2SS	28
SU3-3	28
SU3-3SS	28
SU4-3	28
SU4-3SS	28
SU4-4	28
SU4-4SS	28
SU6-3	28
SU6-3SS	28
SU6-4	28
SU6-4SS	28
SU6-6	28
SU6-6SS	28
SXP2SS	28
SXP3	28
SXP3SS	28
SXP4	28
SXP4SS	28
SXP6	28
SXP6SS	28
TPH21B	29
TPH24B-B	29
TPH24B-B	29
TPH35B	29
U02BP	45
U1-1	28
U2-1	28
U2-2	28
U3-2	28
U3-3	28
U4-2	28
U4-3	28
U4-4	28
U6-2	28
U6-3	28
U6-4	28
U6-6	28
V411A	19
V411B	19
V412A	19
V412B	19
V412C	19
V412D	19
V4132C	19

PART #	PAGE #
V4132G	19
V4132T	19
V4134C	19
V4134T	19
V413A	19
V413B	19
V413C	19
V413D	19
V413E	19
V4142C	19
V4143C	19
V4143E	19
V4143T	19
V414A	19
V414B	19
V414C	19
V414D	19
V414E	19
V414R	19
V415A	19
V415B	19
V4162C	19
V4163C	19
V4164C	19
V4164T	19
V416A	19
V416B	19
V416C	19
V416D	19
V416E	19
V417A	19
V417B	19
V417D	19
VW1	34
VW2	34
WHC312-300	31
WW02311	45
WW03011	45
WW03033	45
WW03511	45
WW03533	45
WW03544	45
XP2	28
XP3	28
XP4	28
XP6	28
XP7	28
XP8	28
XPK4	28
XPK6	28



# ***GIVE YOUR CAR THE FULL BOAR SOUND***



**Distributed by:**



 Find us on  
**Facebook**

Adamsville Industrial Park, P.O. Box 729  
Adamsville, Tennessee 38310  
Phone: 731-632-1255 Fax: 731-632-3058  
[www.Jonesexhaust.com](http://www.Jonesexhaust.com)